



NORTHWEST NEWSLETTER



Northwest Federation of Mineralogical Societies
Tom Burchard, Circulation
875 E 4500 S
S Ogden, UT 84403-2913

VOLUME 53, NO. 7 Northwest Federation of Mineralogical Societies JUNE 2013

TIME SENSITIVE MATERIAL - PLEASE DO NOT DELAY

Kathy Moedl President



I missed the deadline in last month's newsletter. I was still coming down from the mid-year meeting high. The mid-year meeting was good and it was nice to see all of you that attended.

Many of you have already had your club shows by now. Now is the time to have your club members send in their entries for competitive and non-competitive showcases at the NFMS show in Butte, Montana in August. The entry form can be downloaded from the NFMS newsletter. Entry deadline is July 10, 2013.

Helpful hints to first time entrants, Juniors and Adults alike:

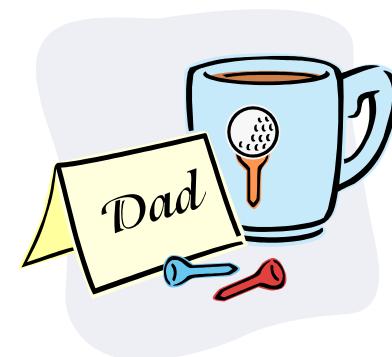
Read the AFMS Uniform Rules (update 1/1/2013) located on the AFMS website under [Amfed.org/Downloads/AFMS Uniform Rules \(update 1/1/2013\)](http://Amfed.org/Downloads/AFMS%20Uniform%20Rules%20(update%201/1/2013).). It is 100 pages but don't be intimidated. Read the general rules and then find your category and focus on that section.

If you are still unsure about your entry or have questions any of the Competitive Exhibits Chairpersons make sure you get in the right category.

After your showcase is judged, the judges are very helpful and encouraging. This helps you expand your knowledge, gets you ready to compete in the AFMS show (if you qualify) and open new doors you didn't know existed.

Opening new doors you didn't know existed is the best part, I think. There is a whole new world out there in the NFMS and AFMS! Be sure to take a look!

I'm looking forward to getting out rockhounding. I purchased a new RV and can't wait to put it to the test! See you out there!!!!



Non-Profit Org.
U.S. Postage Paid
Burley ID 83318
Permit No. 9

What's Inside:

President's Message	1
VPs' Messages	3
Safety Chair Report	4
Editor's Rockpile	4
Credentials for the Annual Meeting in Butte	5
Competitive Exhibts in Butte...	6
Reminder and a Little Fun	7
Rock Show Calendar	8

SUMMER NEWSLETTER SCHEDULE:

July issue deadline: June 15
Note that ALL new Annual Meeting information must be in this issue.

There will not be an issue in August!

Aug/Sept issue deadline: Aug. 15

October deadline: September 15

Contact
Beth Heesacker
Email: nfmseditor@coho.net

NFMS Website:

**Flag Day
June 14**



**Independence
Day
July 4**

NFMS EXECUTIVE OFFICERS 2012-2013

PRESIDENT: Kathy Moedl, Idaho Falls Gem and Mineral Society, 149 E. 1st. N, Rexburg, ID 83440, (208) 356-4169, kmoeidl@cableone.net
1st VICE PRESIDENT: Don Innes, Far West Lapidary, 54416 Arago-Fishtrap Rd., Myrtle Point, OR 97458, (541) 396-5722, doninnes.innes20@gmail.com
2ND VICE PRESIDENT: Warren Rood, Marcus Whitman Gem and Mineral, 243 E. Birch, Walla Walla, WA 99362, warrenrood@yahoo.com
EXECUTIVE SECRETARY: Joan Day, Golden Spike Gem & Mineral Society, 509 Highland Blvd., Brigham City, UT. 84302, (801) 391-2912, joanday@sisna.com
TREASURER: Lyle Vogelpohl, West Seattle Rock Club, 8810 37th Ave. SW, Seattle, WA 98126-3617, (206) 932-3292, nfmstreasurer@comcast.net

NFMS STANDING COMMITTEES

BUDGET: Don Innes, 1st Vice President (see above)
BULLETIN AIDS: OPEN
CIRCULATION: Tom Burchard, Golden Spike Gem & Mineral Society, 875 E 4500 S, S. Ogden, UT 84403, (801) 479-4286, Roxhund@aol.com
COMPETITIVE EXHIBITS:
JUDGING DIRECTOR: Dee Holland, Bitterroot Gem/Mineral Soc, Hamilton, MT, P.O.Box 23, Tendoy, ID, 83468, (208) 756-2394, beauholland@centurytel.net
RULES AND AWARDS CHAIR: Carol Cimolino, Everett Rock and Gem Club, 1429 Avenue D, PMB 518, Snohomish, WA 98290, (360)668-0378
REGISTRAR: Joe Slouber, Butte Gem & Mineral, P.O. Box 427, Butte, MT 59701, (406-494-3034) mt.rockhound@bresnan.net
CREDENTIALS: Del & Clara Walker, Tualatin Valley Gem Club, 12377 SE Davis Loop, Prineville, OR 97754, (541) 447-7826, dcwalker@embarqmail.com
CUSTODIAN: Warren Rood, 2nd Vice President (see above)
DIRECTORY: Carol Willey, Oregon Coast Agate, 929 Ojalla Rd., Siletz, OR 97380, (541)444-1360, going4rocks@dish.net
EDUCATION: Jim & Libby Spencer, Clackamette Mineral & Gem Society, 660 Collins Crest, Gladstone, OR 97027, (503) 650-5027, the_spencers@comcast.net
ENDOWMENT FUND: CHAIRMAN: Edna Nelson, Mt Hood Rock Club, 66830 Maple Crest Rd., Deer Island, OR 97054, (503) 397-5284, rockhoundstoo1966@yahoo.com
TREASURER: NFMS Treasurer (see above)
FINANCIAL ADVISOR: Jon Spunaugle, 12719 NE 116th St, E-101, Kirkland, WA 98034-8458, (360) 624.7604, jonspe@comcast.net
HISTORIAN: Shirley Leeson, Bitterroot Gem/Mineral Soc, Hamilton, MT, P.O. Box 23, Tendoy, ID., 83468-0023, (619) 460-6128 or (208) 756-2394, beauholland@centurytel.net
JUNIORS CHAIR: Audrey Vogelpohl, West Seattle Rock Club, 8810 37th Ave. SW, Seattle, WA 98126-3617, nfmsjunior@comcast.net
NEWSLETTER EDITOR: Beth Heesacker, Clackamette Gem & Mineral Corp., 4145 NW Heesacker Rd., Forest Grove OR, 97116, (503) 357-8804, nfmseditor@coho.net
NFMS Club-at-Large: 1st Vice President (see above)
NOMINATING CHAIRMAN: Judi Allison, Hatrockhounds Gem & Mineral Society, 1701 NW 11th #A, Hermiston, OR 97838, (541) 720.4950, jall@eotnet.net
NORTHWEST ROCKHOUND RETREAT (Hancock): Lamar Tilgner (Chair), Mt. Hood Rock Club, 200 SE Olvera Ave., Gresham, OR 97080, (503) 666-2905, lstilgner1@verizon.net
PAST PRESIDENTS COUNCIL: Evelyn Cataldo, Lakeside Gem & Mineral Club, 99509 Brandon, Kennewick, WA 99338, (509) 628-0170, ecataldo@cbtabs.com
PUBLIC LANDS ADVISORY: Andy Johnson, Lakeside Gem & Mineral Club, P.O.Box 3251, Pasco, WA 99302, (509)546-1950, cbagates@hotmail.com
SLIDE/ VIDEO LIBRARIAN: Tim and Sharon DeGrie, Member-at-Large, P.O. Box 458, Goldendale, WA 98620, 509-772-2533, cell 509-910-9228 ROCKNlibrary@yahoo.com
RESOLUTIONS: Fred Burton, Golden Spike Gem & Mineral Society, 90 Lakeview, Tooele, UT 84074, (435)882-8614, f7burton@gmail.com

SAFETY: Chuck Sonner, Southern WA. Mineralogical Society, 165 Tingle Rd., Winlock, WA. 98596, (360) 785-3909, chuckagate2@yahoo.com
SCHOLARSHIP: Evelyn Cataldo, Lakeside Gem and Mineral Club, 99509 Brandon, Kennewick, WA, 99338, (509) 628-0170, Ecataldo@cbtabs.com
SHOW CHAIRPERSON 2013: Butte, Montana
SHOW COORDINATION: Pat Lambert, Lakeside Gem & Mineral Club, 26106 S. Oak, Kennewick, WA 99337, palambert@charter.net
STAMPS: Hermina Kolski, Club-at-Large, 208 Riverview 2 East, Great Falls, MT 59404-1534, (406)231-0620
SUPPLIES: OPEN
WAYS & MEANS: Janice Van Cura, Willamette Agate & Mineral Society, Inc., 3448 NW Covey Run, Corvallis, OR 97330 (541)753-2401, jvancura@peak.org
WEBMASTER: Brad Larson, Owyhee Gem and Mineral Society, 4112 E. Park Ridge Dr., Nampa, ID 83687 (208) 465-1920, nfms.webmaster@gmail.com

NFMS WEB SITE: www.amfed.org/nfms

NFMS SPECIAL COMMITTEES

FIELD TRIP CHAIRMAN: Doug True, Billings Gem & Mineral Club, 2622 Broadwater, Billings, MT 59102, 406.670.0506, dtruefossils12@yahoo.com
ROCKHOUND OF THE YEAR: Viola Jones, Skagit Rock & Gem Club, P. O. Box 2841, Mt. Vernon, WA. 98273, (360) 424-8340, rockslx1vi.george@frontier.com
WEBSITE CONTEST: Cheri George

AFMS COMMITTEES (NFMS Representatives)

AFMS PRESIDENT: Don Monroe, **ENDOWMENT FUND:** Chris Blickfeldt, **EDITORS HALL OF FAME-Open,** **NEWSLETTER EDITOR:** Beth Heesacker, **NFMS CLUB BULLETIN AIDS-Open,** **ROCKHOUND OF THE YEAR:** Evelyn Cataldo (chair) & Viola Jones, **CONSERVATION & LEGISLATION:** Darlene Posthuma, **EDUCATION-ALL AMERICAN AWARD:** Jim & Libby Spencer, **INTERNATIONAL RELATIONS:** Bill and Janet Smith, **JUNIORS PROGRAM:** Audrey Vogelpohl, **PROGRAM COMPETITION:** Tim & Sharon DeGrie, **PUBLIC RELATIONS-OPEN,** **SAFETY:** Chuck Sonner, **SCHOLARSHIP FOUNDATION:** Dee Holland (chair) & Evelyn Cataldo, **SUPPLIES AND PUBLICATIONS:** Tim Hoff, **JUDGE TRAINING COMMITTEE:** Dee Holland, **UNIFORM RULES:** Larry Hulstrom, **WAYS AND MEANS:** Lauren Williams (chair) & Janice Van Cura, **WEBSITE:** Brad Larson, **WEBSITE CONTEST –** Cheri George.

THINGS YOU SHOULD KNOW

The **AMERICAN LANDS ACCESS ASSOCIATION (ALAA)** is a 501(c)(4) organization. Its purpose is to promote and ensure the right of amateur hobby fossil and mineral collecting, recreational prospecting and mining, and the use of public and private lands for educational and recreational purposes; and to carry the voice of all amateur collectors and hobbyists to our elected officials, government regulators and public lands managers. Your annual individual membership fee of \$25.00 helps support their activities. Club membership is \$50 per year. Send dues to: ALAA Colleen McGann is now ALAA Membership Chair, renewals should go to: P.O. Box 224, Santa Clara, CA 95052-0024 or contact: membership@amlands.org For more information contact: Shirley Leeson, ALAA Vice President, P.O. Box 23, Tendoy, ID, 83468, president@amlands.org

The **AFMS NEWSLETTER** is published monthly except Jan-Jul-Aug by the American Federation of Mineralogical Societies. Each NFMS member club should have three people (usually the Pres, Secretary, and Editor) receiving the AFMS Newsletter. If they are not, or if anyone else wants to subscribe (\$4.50 per year). Contact: AFMS Central Off., Steve Weinberger, P.O. Box 302, Glyndon, MD 21071-0302 cebar62@aim.com Make checks payable to "AFMS".

The **NORTHWEST NEWSLETTER** is the official publication of the Northwest Federation of Mineralogical Societies (NFMS) and is usually published ten (10) times per year. This publication is brought to you through your club membership in NFMS. The purpose of the Northwest Newsletter is to keep all NFMS members informed of activities and events pertaining to

the business and services of the Federation. The Newsletter is printed and mailed to approximately 3500 homes in six states by Burley Reminder in Burley ID. For matters related to the Newsletter (i.e. content, advertising, etc) contact the **Newsletter Editor**. For matters related to the Newsletter circulation (new members, address changes, etc.) contact **Circulation**.

SHOW COORDINATION. Your Federation provides a free service for NFMS members by listing your show in this Newsletter, on the NFMS website, two magazines ("Rocks and Minerals" and "Rock and Gem") and the on-line Calendar from "Lapidary Journal". Please provide the date and time for the show, the club name and show title (if applicable), the location of the show, and most important a contact person with address, e-mail address and/or phone (e-mail is preferred). Please send your show information four to six months in advance to the **Show Coordination Chairperson**. If you see an error once your show is listed, or if your show is not listed, contact the **Newsletter Editor**.

SAVE STAMPS PROGRAM. NFMS members are encouraged to use and save commemorative stamps. The money generated from the sale of these used (cancelled) stamps is then donated to Cancer Research. The collected stamps can be sent to the **Stamps Chairman**, brought to the NFMS Annual Show or given to your Federation Director in your club.

ATTENTION CLUB TREASURERS**Where to send your money**

To NFMS Treasurer for:

1. Dues and supplies
2. Donations for the general fund
3. Donations to Junior Achievement
4. Advertisement in this Newsletter

Send to: Lyle Vogelpohl, see Treasurer this page.

To NFMS Endowment Fund Treasurer for:

1. Donations to Endowment Fund
2. Memorial contributions

Make check payable to NFMS Endowment Fund, send to Endowment Fund Treasurer.

To NFMS Scholarship Chairperson for:

1. Donations to AFMS Scholarship Fund
2. Memorial contributions to AFMS Scholarship

Make check payable to **AFMS Scholarship Fund**.

Send to: Rose Alene Mc Arthur (see Scholarship this page).

To AFMS Endowment Fund for:

1. Donations to AFMS Endowment
2. Memorials

Send to: See AFMS Newsletter

To ALAA Treasurer for:

1. Memberships, new and renewals
2. Donations

Make check payable to ALAA

Send to Joyce Hanschu, ALAA Treasurer, 6607 Sturbridge Ln; Canton, MI 48187-2638

NFMS NEWSLETTER AND WEBSITE**ADVERTISEMENT**

Members, Non-members, clubs, etc. can advertise in the Northwest Newsletter. This service is provided to help defray the cost of printing and mailing the newsletter and is encouraged by the Federation. The only criteria for the ad is that it be hobby related (e.g. rocks, equipment, grit, shows, etc.).

Ads for the Northwest Newsletter are \$1.50 per square inch.

Example: 3" x 4" ad = 12 inches

12 inches x \$1.50 = \$18 per issue of the Newsletter

For an additional 50% of the cost of the Newsletter ad, you can have the same ad placed on the NFMS website for the same length of time. The Newsletter ad must be purchased to receive this additional advertisement.

Do not send ads on colored paper because the back-ground will look gray in the ad. The Editor will send a billing statement to the customer which will include instructions to make payment to the NFMS Treasurer. For more information or questions, call, e-mail or write the **Newsletter Editor**

To see this newsletter in living color and to see it by the first of the month go to
<http://www.amfed.org/nfms/newsletters.asp>
and click on the month you want to see.

COMMITTEE REPORTS



Don Innes 1st VP

Have you ever wondered?

Have you ever wondered why the average age of our club members is around and above 50 years old?

When we were kids we all liked to pick up and throw or keep pretty rocks. We began to collect a

few. As we got older (in our teens) we found other pursuits to entertain us, such as horses, cars and the opposite sex.

The younger folks now find TV, Computer games, facebook, twitter and cell phones to entertain them. It is hard to get them out in the country to the wide open spaces because they miss the previous entertainment.

We have to spend a lot more hours working, sometimes two jobs and with both Parents working, leaving little time for the little excursions into the country. Prices of gas, insurance etc. get in the way of these weekends where we used to take our kids to see the world around us. It is much harder to get the youngsters away from the TV and other forms of entertainment.

I wonder if the generations ahead of us will be willing to give up the conveniences to become Rock Hounds. We are losing more and more of the freedom to do these things, and I do hope we can change that.

Think of it, Gemstones (rocks) are formed in the most violent way in the upper mantle (magma). They are found, cut, polished and fashioned into jewelry. The most famous were worn by nobility, kings, queen's dictators and others. These folks are gone but the gems are still here. Some are 100's of years old.

The lure of gemstones is "possession". The pride of ownership. Murders have been committed, wars have been fought and countries have changed leadership because of these "pretty rocks".

Our interest in collecting rocks varies in many ways. We sell, show, collect, fashion and wear the articles we manufacture, even use them in rock gardens and pathways. Writing about pathways, we have just had a field trip to Joe Cota's Rock Castle in Lebanon Oregon. As we walked for a couple of hours down "pathways" lined with rocks we must realize the earth is still making gemstones in the hot violent Magma.



Warren Rood 2nd Vice President

As a child I did a lot of exploring in the fields and woods around our house. I remember the joy of finding a mushroom, a bird's nest and a shiny agate

in the creek. I looked forward to finding new treasures and would spend hours upon hours exploring. However the further I ascended into adulthood, the less time I had for exploring. By the time I was wrapped up in my career and started raising my family, discovery time was lost. In fact I almost forgot about it.

This is one thing I have enjoyed since joining my local rock club ten years ago. I have rediscovered discovery. I will never forget my first field trip with my club when I found my first nice petrified wood limb on Saddle Mountain. Everybody gathered around and handled, inspected and admired the 6 inch limb. They encouraged and complimented me on a nice job. I thought to myself, maybe I can't fish, but I can find nice treasures in the ground.

Whether it was my first field trip, or the large NFMS trips or the one I just finished yesterday on Red top mountain, each trip has been all about good friends, family and discovering treasures. I felt especially fortunate on this trip to Red Top Mountain, as we had an experienced person share hard to find spots that yielded birds egg size blue agate nodules that were embedded in basalt. We also found two seams of blue agate and a very hard to find jasper. Treasures that would never have been discovered if we had not made the effort.

During these nice weather months I hope that each of you can rediscover the joy of discovery.



Having Fun: Junior Activities By Jim Brace-Thompson, AFMS Junior Activities Chair

Take Full Advantage of Resources for Kids

The AFMS offers a free Badge Program via Future Rockhounds of America to help local clubs guide their pebble pups and junior members through 20 areas of our hobby, rewarding them with colorful badges along the way. (See www.amfed.org/fra/fra_badge.htm.)

I continue to encourage each and every local society with a Federation affiliation to take full advantage of this free program. It can be used in a group setting during monthly club meetings or to guide individual kids in an independent study or home-schooling sort of way. But this is far from the only resource available to you!

I encourage you to follow the example of Steve Veatch, who oversees juniors in the Colorado Springs Mineralogical Society and the Lake George Gem & Mineral Club. Steve seeks out and uses every possibility for involving kids. For instance, he encourages them to write articles and poems for publication in their local society newsletters, and many end up in the Rocky Mountain and American Federation bulletin contests.

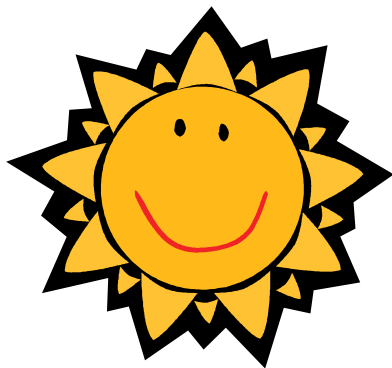
He's helped his society's juniors get published in scientific journals and uses other resources, like the National Park Service's National Fossil Day art contest, science fairs, the Science Olympiad at the University of Colorado, and more.

Like Steve, let's all seek out every resource available to help fan the interests of kids in our societies. There are the wonderful Diamond Dan activities and publications (www.diamonddanpublications.net), the Mineral of the Month Club, activities via Earth Science Week (www.earthsciweek.org), and more.

You'll also find earth-science related activity books and kits in stores catering to teachers or in mail order businesses like Edmund Scientifics or Wards. Check 'em all out—and then, have fun!

Via AFMS Newsletter 5/13

COMMITTEE REPORTS



Chuck Sonner Safety Chair

IT'S HOT OUT THERE.....

I had another story planned for this month but work got in the way. For those of you at the mid-year meeting,

the neck brace is off. This allowed me to work in the yard. I had some stumps removed and started to fill in the holes. Things were working well as long as I was in the shade. But mid 80's and direct sunlight was not what the doctor ordered.

I started to think about all the field trips coming this summer. Are we prepared for what the SUN will bring? How about a few reminders:

- Up to date first aid kit.
- Sun screen.
- Any medications that might be needed.
- Plenty of water.
- Have your vehicle serviced. It could be a long walk.
- If you are off-roading, two spare tires might be a good idea. Some cars come with the little donut tire. You might want to replace with a standard spare.
- For us that are losing their hair, a nice hat would be a good idea.

This is just a short list. You should make your own to reflect your needs. Just one last item - a walking stick for those going into the desert to beat the brush for snakes. This idea was from Del & Clara Walker Last, BE SAFE OUT THERE.



Symptoms of Heat Stroke

The hallmark symptom of heat stroke is a core body temperature above 105 degrees Fahrenheit. But fainting may be the first sign.

Other symptoms may include:

- Throbbing headache
- Dizziness and light-headedness
- Lack of sweating despite the heat
- Red, hot, and dry skin
- Muscle weakness or cramps
- Nausea and vomiting
- Rapid heartbeat, which may be either strong or weak
- Rapid, shallow breathing
- Behavioral changes such as confusion, disorientation, or staggering
- Seizures
- Unconsciousness

First Aid for Heat Stroke

If you suspect that someone has a heat stroke, immediately call 911 or transport the person to a hospital. Any delay seeking medical help can be fatal.

While waiting for the paramedics to arrive, initiate first aid. Move the person to an air-conditioned environment -- or at least a cool, shady area -- and remove any unnecessary clothing.

If possible, take the person's core body temperature and initiate first aid to cool it to 101 to 102 degrees Fahrenheit. If no thermometers are available, don't hesitate to initiate first aid.

You may also try these cooling strategies:

- Fan air over the patient while wetting his or her skin with water from a sponge or garden hose.
- Apply ice packs to the patient's armpits, groin, neck, and back. Because these areas are rich with blood vessels close to the skin, cooling them may reduce body temperature.
- Immerse the patient in a shower or tub of cool water, or an ice bath.

If emergency response is delayed, call the hospital emergency room for additional instructions.

After you've recovered from heat stroke, you'll probably be more sensitive to high temperatures during the following week. So it's best to avoid hot weather and heavy exercise until your doctor tells you that it's safe to resume your normal activities.

Courtesy of WebMD: <http://www.webmd.com/a-to-z-guides/heat-stroke-symptoms-and-treatment>



From the Editor's Rockpile By Beth Heesacker

I hope all of you are getting excited about going to Butte, Montana for the Annual NFMS Meeting. The last time we were in Butte, we had a marvelous time. The mining, the minerals, the rock, the history and all were a package deal that was almost impossible to beat.

I haunted the bookshops, the head frames of mines, the museums, the wonderful old homes with their gingerbread moldings and even found an Orthodox church with hundreds of icons spread across its walls. I have very fond memories of that last trip.

I am so pleased that Butte has volunteered to host this year's meeting again. I hope to retrace my steps and go off on some more wonderful side trips of discovery this year. Butte has become one of my favorite places.

And, last but certainly not least, there is the meeting and show to attend. All the friends from across the Northwest to see again. The Editor's Breakfast. The Awards' Banquet. The rocks and minerals on display and for sale. It all adds up to an exciting way to really get fully immersed in the rockhound hobby. See you there!!!

NFMS ANNUAL MEETING, AUGUST 9, 2013

A REMINDER AND REQUEST FROM THE CREDENTIALS COMMITTEE

The NFMS Credentials Committee Chairpersons, Clara & Del Walker, must receive the **NAMES** (only) of Club Directors and Delegates as soon as possible (ASAP) for planning purposes of the meeting. The annual meeting will be held at 6:00 p.m. on Aug. 9, 2013. Registration is open one hour prior to the meeting at the Mining City Science Center, Butte. MT. The Credential forms below must be completed by the designated director/delegate, signed by the Club President and Secretary, and **BROUGHT BY THE DIRECTOR AND DELEGATE** to the annual meeting. Or, this should be done by the alternate delegate(s), if necessary. Send the name(s) (not the credentials forms) at least one week prior to the meeting to:

Clara & Del Walker
 12377 SE Davis Loop
 Prineville, OR 97754

Phone: 541-447-7826 (cell: 503-812-6540) or email to dcwalker@embarqmail.com

NFMS DIRECTOR'S CREDENTIALS

Name of Director _____
 Name of Club _____
 City, State _____
 Club President Signature _____
 Club Secretary Signature _____
 Date _____

Must be **completed** and **signed** to be seated with voting rights at the Northwest Federation of Mineralogical Societies Annual Meeting

NFMS DELEGATE'S CREDENTIALS

Name of Delegate _____
 Name of Club _____
 City, State _____
 Club President Signature _____
 Club Secretary Signature _____
 Date _____

Must be **completed** and **signed** to be seated with voting rights at the Northwest Federation of Mineralogical Societies Annual Meeting

NFMS' 75th Anniversary Show

Features More than 100 top exhibits of minerals, fossils, gems and jewelry, field trips every day, silent auction, kids area, more!

Dealers: Thirty of the finest purveyors of jewelry, minerals, fossils, lapidary materials and hobby supplies

Speakers Montana geology, Hot places to collect, Montana's gemstones, more!

August 9th, 10th, & 11th, 2013
Butte Civic Center

Hosted by Butte Mineral and Gem Club

WANTED

The NFMS will be hosting both the silent and voice auction at the annual show in Butte, MT. We are asking member clubs to bring ½ **bucket of clean identified material** to the show. This material could be from your area. Longview WA will be bringing coprolite from Salmon Creek. This material is common to them but prized outside their area. If you would like to bring more, we will not turn it down. Something special will be put into the voice auction.

We also need volunteers to run the silent auction.

Dick Parks will be chairing the auctions. He can be contacted at pacrats2@q.com or 360 892-3716



NFMS ANNUAL MEETING, AUGUST 9, 2013



COMPETITIVE EXHIBITING AT BUTTE
Dee Holland, Rules Committee

I'd like to share something with all of you. I have mentioned in the past that Northwest and California are basically the only regional federations who are supporting competitive exhibiting.

This past month I was involved in the applications for California and I'm proud to announce they will have 57 competitive exhibits at their show May 31 – June 2.

I know our Federation is spread through many states, but it's our 75th Anniversary, the show and convention is in a beautiful, historic town, BUTTE, MONTANA and I know you will want to attend. Why not bring along a competitive exhibit to add to the show and offer something important to the public, your exhibit.

If you don't know what division or class, contact me and we can talk. Just don't be left out.....

Dee Holland, NFMS Rules Committee
beauholland@centurytel.net

Ore-Rock-On On DVD Version 5.2
 Oregon, Washington, and Idaho Rock Dig Locations DVD for PC & MAC

- . A comprehensive guide for digging lapidary, mineral, and fossil materials
- . Includes ALL rockhounding sites in the NEW editions of Gem Trails of Washington & Oregon and Rockhounding Idaho
- . 991 USGS topo map & overview map images with digs clearly marked
- . A relief map of each state points you to maps or detailed info & photos
- . Waypoint files to upload to your GPS – Over 2,100 Waypoints!
- . 36 detailed descriptions of dig sites that have GOOD material!

\$41.50; Send Money Order only to Tim Fisher, 18403 S Clear Acres Drive, Oregon City OR 97045, for credit cards see <http://OreRockOn.com/CD.htm>

Purple Moon 830 SE Pioneer Way, # 109
 Oak Harbor, WA 98277
 (360) 679-2167

Rare and common crystals,
 Mineral specimens,
 Fossils, Shells
 from around the world.

Huge selection in every price range
 with unbeatable prices.

Beautiful Whidbey Island's
 favorite gift shop.

10% off with mention of this ad.

Reminder:



All NEW information concerning the Show or Meetings in Butte, Montana must be submitted by June 15th for the July/August NFMS Newsletter.

Please note:

Competitive Case application is in the March edition.

Non-Competitive Case application is in the May edition.

Registration is in the May edition.

Credentials are in this edition.

Please find what you need and download it from the NFMS Website, <http://www.amfed.org/nfms/newsletters.asp> . Thank you.

A REMINDER AND LITTLE FUN

AFMS Code of Ethics

I will respect both private and public property and will do no collecting on privately owned land without the owner's permission.

I will keep informed on all laws, regulations of rules governing collecting on public lands and will observe them.



I will to the best of my ability, ascertain the boundary lines of property on which I plan to collect.

I will use no firearms or blasting material in collecting areas.

I will cause no willful damage to property of any kind - fences, signs, or buildings.

I will leave all gates as found.

I will build fires in designated or safe places only and will be certain they are completely extinguished before leaving the area.

I will discard no burning material - matches, cigarettes, etc.

I will fill all excavation holes which may be dangerous to livestock.

I will not contaminate wells, creeks or other water supply.

I will cause no willful damage to collecting material and will take home only what I can reasonably use.



I will practice conservation and undertake to utilize fully and well the materials I have collected and will recycle my surplus for the pleasure and benefit of others.

I will support the rockhound project H.E.L.P. (Help Eliminate Litter Please) and will leave all collecting areas devoid of litter, regardless of how found.

I will cooperate with field trip leaders and those in designated authority in all collecting areas.

I will report to my club or Federation officers, Bureau of Land management or other authorities, any deposit of petrified wood or other materials on public lands which should be protected for the enjoyment of future generations for public educational and scientific purposes.

I will appreciate and protect our heritage of natural resources.

I will observe the "Golden Rule", will use "Good Outdoor Manners" and will at all times conduct myself in a manner which will add to the stature and Public "image" of rockhounds everywhere.

MIND GAMES

Wow! I've seen this with the letters out of order, but this is the first time I've seen it with numbers. (I will never feel guilty about typos in the newsletter again; it just a test.)

Good example of a Brain Study: If you can read this OUT LOUD you have a strong mind. And better than that: Alzheimer's is a long, long ways down the road before it ever gets anywhere near you.

7H15 M3554G3 53RV35 7O PR0V3 H0W 0UR M1ND5 C4N D0 4M4Z1NG 7H1NG5! 1MPR3551V3 7H1NG5! 1N 7H3 B3G1NN1NG 17 WA5 H4RD BU7 N0W, 0N 7H15 LIN3 Y0UR M1ND 1S R34D1NG 17 4U70M471C4LLY W17H 0U7 3V3N 7H1NK1NG 4B0U7 17, B3 PROUD! 0NLY C3R741N P30PL3 C4N R3AD 7H15. PL3453 F0RW4RD 1F U C4N R34D 7H15.

To my 'selected' strange-minded friends: If you can read the following paragraph, forward it on to your friends and the person that sent it to you with 'yes' in the subject line. Only great minds can read this. This is weird, but interesting! If you can read this, you have a strange mind, too. Can you read this? Only 55 people out of 100 can. I don't believe that I could actually understand what I was reading. The phenomenal power of the human mind, according to a research at Cambridge University, it doesn't matter in what order the letters in a word are, the only important thing is that the first and last letter be in the right place. The rest can be a total mess and you can still read it without a problem. This is because the human mind does not read every letter by itself, but the word as a whole. Amazing huh? Yeah and I always thought spelling was important! If you can read this forward it

Even if you are not old, you will find this interesting...This is NOT a joke. If you were able to pass these tests, you can cancel your annual visit to your neurologist. Your brain is great, and you're far from having a close relationship with Alzheimer...

Via RMFMS Newsletter, 5/13; SCRIBE Jan-Mar/13

Clubs, please note that any SHOW INFORMATION should go to Pat Lambert, Show Coordinator. She will then send the information out to the rock magazines, websites and to this newsletter.

All MEMBERSHIP UPDATES, including new members so they can receive this newsletter as soon as possible, should go to Tom Burchard, Circulation Chair and to Carol Willey, Directory Chair.

See the second page of this newsletter for address information for these Chairmen and Chairwomen.

Thank you!



NFMS MEMBER CLUBS' SHOW SCHEDULE

June 15-16 Sat 10-6, Sun 10-4:30	Oregon Coast Agate Club	Yaquina View Elementary School, 351 SE Harney St, Newport, OR	Ed Anderson 541 447 7826 PO Box 293 Newport, OR 97365
July 19-21 Fri 10-5, Sat 10-5 Sun 10-4	Lower Umpqua Gem and Lapidary Society	Reedsport Comm. Ctr., 451 Winchester Avenue, Reedsport OR	Bill or Virginia Hendrickson 541 271 6816, 69833 Stage Road North Bend OR 97459
July 27-28 Sat 10-6, Sun 10-5	Northwest Montana Rock Chucks	Flathead County Frngds., 265 North Meridian, Kalispell MT	Milah Gano or Joe Berg 406 844 3560 PO Box 433 Lakeside MT 59922, mallards_g@hotmail.com
July 27-28 Sat 9-6, Sun 9-5	Washington Agate and Mineral Society	Parkside Elementary School 301 Central Avenue East Tenino WA 98589	Daniel De Boer PO Box 2553 Olympia WA 98507 keylock1@live.com
August 2-4 Fri 10-5, Sat 10-5 Sun 10-4	Far West Lapidary and Gem Society	North Bend Community Center, 2222 Broadway, North Bend OR	Don Innes 541 396 5722 doninnes.innes20@gmail.com
August 9-11 Fri 9-5, Sat 10-5 Sun 10-5	Butte Mineral and Gem Club NFMS' 75th Anniversary Show	Butte Civic Center 1340 Harrison Avenue, Butte MT	Pete Knudesen 406 723 8524 1301 West Gold Street Butte MT 59701
August 9-11 Fri 10-9, Sat 10-9 Sun 10-6	Port Townsend Rock Club	Jefferson Co. Frgrnds 4907 Landers St., Port Townsend WA 98368	Dave Eddie 360 379 5633 PO Box 237 Port Hadlock WA 98339
August 10-11 Sat 9-5, Sun 10-5	Maplewood Rock and Gem Club	Maplewood Clubhouse 8802 196 th St. SW, Edmonds WA 98026	Lauryn MacGregor little-toad@att.net PO Box 5657 Lynnwood WA 98046
September 7-8 Sat 9-5, Sun 10-4	Umpqua Gem & Mineral Club	Douglas County Fairgrounds, 2110 Frear St, Roseburg OR 97471	Janet Stringfellow 541 643 4037 soldbyjanets@yahoo.com
September 14-15 Sat 10-5, Sun 10-5	Marcus Whitman Gem and Mineral Society	Walla Walla Co. Frgrnds, Com. Center, 9 th Street & Orchard, Walla Walla WA	Jack L Edwards 509 520 1182 jcedwards1475@yahoo.com
September 21-22 Sat 9-6 Sun-10-5	Hellgate Mineral Society	Hilton Garden Inn, 3720 North Reserve Street, Missoula MT 59806	Bob Riggs 14 Holiday Lane Missoula, MT 59801, 406 543 3667
September 21-22 Sat 10-6, Sun 10-4	S. Washington Mineralogical Society	Castle Rock Fairgrounds 120 Firlane Road, Castle Rock WA	Jackie Furuli jfuruli@yahoo.com 360 431 0059
September 28-29 Sat 10-5, Sun 10-4	Billings Gem and Mineral Club	Billings Hotel and Convention Center 1223 Mullooney Lane Billings MT	Doug True 406 670 0506 dtruefossils12@yahoo.com
October 5-6 Sat 10-6, Sun 10-4:30	Springfield Thunderegg Club	Guy Lee Elementary School, 755 Harlow Road, Springfield OR	Jim Nelson 541 687 8100 tworockyj@aol.com , Patrica Engleman thunderegg.rockclub@gmail.com
October 11-13 Fri 10-6, Sat 10-6 Sun 10-5	Portland Regional Gem and Mineral Clubs	Washington County Fair Complex 873 NE 34 th Avenue Hillsboro OR 97124	L. Smith Portland.regionalDealerChair@gmail.com PO Box 5401 Portland OR 97228
October 12-13 Sat 10-5, Sun 10-5	Marysville Rock and Gem Club	Totem Middle School Cafeteria, 7 th Street and State Avenue Marysville WA	Brian Murril 425 346 9313 bmurril@aol.com
October 19-20 Sat 10-6, Sun 10-5	Hells Canyon Gem Club	Nez Perce County Fair, 1229 Burrell Avenue, Lewiston ID	Linn Enger 208 746 4957 engerocks@yahoo.com
October 26-27 Sat 9-6, Sun 10-5	Clackamette Mineral & Gem Golden Jubilee	Clackamas County Frngds, 694 NE 4 th Ave, Canby OR 97013	Rick Mauer 503 691 6395 tallericardo@juno.com
November 9-10	Maplewood Rock and Gem Club	Maplewood Clubhouse 8802 196 th St. SW, Edmonds WA 98026	Lauryn MacGregor little-toad@att.net PO Box 5657 Lynnwood WA 98046
March 1 - 2, 2014 Sat 10-6, Sun 10-5	East KingCo Rock Club	Pickering Barn, 1730 - 10 th Avenue NW, Issaquah WA 98027	Robin Feiner 206 579 8448 PO Box 2203 Redmond WA 98073