



NORTHWEST NEWSLETTER



TIME SENSITIVE MATERIAL

Northwest Federation of Mineralogical Societies
Tom Burchard, Circulation
875 E. 4500 S
S Ogden, UT 84403-2913

VOLUME 58, NO. 3 Northwest Federation of Mineralogical Societies MAR 2018



Keith Fackrell President

This has been one of the Craziest Winters and Spring I have ever witnessed. I know very well that the Ground Hog saw his shadow on February 2, so that is supposed to indicate we are going to have six more weeks of Winter. Well, maybe this will hold true. The six weeks of Winter should end this weekend, March 16th or 17th.

In my home area, we have rain & snow predicted and we are going to be setting up for our Annual Rock & Gem Show. Rain and snow during the show is NOT all bad. First of all we will be getting the moisture we need during the Summer. Second, people will just have to come to the show & enjoy their time spent inside where it will be warm and dry and we will be able to renew old friendships, and develop new friends.

The time is now coming very fast to the day of the Annual NFMS/Yakima Rock Show - April 27, 28 & 29, 2018

I hope you have all marked this date on your calendar and you are able to attend this show and the NFMS annual convention. I know you will have a great time, especially if you get involved. I hope to see you there.

Thanks for all you do for NFMS & your local Club.



Ronnie Watkins 1st Vice President

Greetings from Tieton!

As I write this message to you, I realize it may just be spring that is making sitting here so difficult. Spring is in the air and Yakima is so beautiful in spring time. The four seasons we have here are clearly defined and the amazing geological scenery combined with it is outstanding. Now, the basalt grass covered hills are all starting to turn spring green and soon the orchards will be all in bloom. The weather has been bearable all winter and now turns to perfect springtime blue skies. Writing this message gives me a moment to reflect on the beauty around me in the mist of all my business.

So, back to business:

Everything going on turns to our annual NFMS show these days. Here in Yakima we are ready for all the fun coming our way. I hope your club will find time to discuss the proposals that will be brought to the annual NFMS meeting. These things may not seem to be especially important to some of your members, so try to explain them in regard to the NFMS purpose statement. Operational Procedures are just that: The means by which we realize our purpose statement. I want to remind you that director and delegate credentials for the annual meeting need to be signed by your club president and secretary and brought to the meeting, and presidents need to send the Walker's the names of those who are going to attend. Now is the deadline for that.

Speaking of deadlines: Registration for the Editor's Breakfast and the Annual Awards Banquet is due April 6th. Competitive Display Entry forms are due by April 13th and Non-competitive exhibit forms need to be in by April 15th.

Take this opportunity to participate and enjoy another great NFMS event. It is the members that make it great!

See YOU at the show!



2nd Vice President Kenneth Zahn

As planning chores for "show-time" have started or are about to hit high-gear for most clubs in our Northwest area, a few thoughts about one important area -- effective local-area advertising -- come to mind. In many clubs, the task for organizing this function is done by an old, experienced hand in a pretty standard way each year. BUT -- do you have any idea of how effective each separate advertising method is toward attracting show attendance, based on actual data?

One way to gather data is to ask attendees at or near the entrance table how they heard about the show. Most will remember and respond, especially if prompted with a few options. The distribution of answers may be surprising, depending on how many different advertising methods have been employed, and where, and when. Of course, the free announcements via the Federation's website calendar and newsletter show lists, and show schedules in Rock and Gem and Rocks and Minerals magazines help, but the overwhelming percentage of attendees are from your local areas. Getting timely word out -- inexpensively -- to those locals is essential.

The most common inexpensive local venues for advertising include a timely newspaper (or events-oriented magazine) story with interview points and pictures; a timely evening news TV interview spot; free public-affairs TV spots, local morning talk-radio interviews of a key club member; inexpensive short 3-day ads (in bright yellow) in the local-area newspaper want-ad or yard-sale section over the Friday- Sunday period; flyers posted on area bulletin boards in supermarkets, on area campuses, in break rooms of local businesses, and at motel/hotel check-in counters; and lighted signage boards if your fairgrounds/convention center is the show's venue and an advertising sign is available there.

(continued on page 3)

What's Inside:

President's Report	1
1st VP's Report	1
2nd VP's Report	1
Officers and Committees	2
Historians Report	3
NFMS Meeting Info	4-6
Convention Schedule	4
NFMS Field Trip	5
Yakima Museum	5
Editor's Rockpile	5
Website Awards	6
Rockhound of the Year	6
NFMS Clubs' Shows	7-8

NEWSLETTER DEADLINE:

Next issue deadline: April 15th
For deadlines and to submit articles
contact
Beth Heesacker
Email: nfmseditor@coho.net

NFMS Website:
<http://NorthwestFederation.org>

To see this newsletter in living color and
to see it usually by the first of the month
go to
[http://NorthwestFederation.org/
Newsletters.asp](http://NorthwestFederation.org/Newsletters.asp) and click on the month
you want to see.

Non-Profit Org.
U.S. Postage PAID
McMinnville, OR
Permit #7

NFMS EXECUTIVE OFFICERS 2017-18

PRESIDENT: Keith Fackrell, Timpanogos Gem & Mineral Society, 2295 E. 700 S. Springville, Utah 84663, krfackrell@gmail.com

1ST VICE PRESIDENT: Ronna Watkins, Yakima Rock and Mineral Club, POB 635, Tieton, WA 98947, (509) 673-0085, 4ronna@gmail.com

2ND VICE PRESIDENT: Kenneth Zahn, Bozeman Gem and Mineral Club, 146 Canyon Meadow Rd., Bozeman, MT 59718, 406-582-8752, kczahn@littleappletech.com

EXECUTIVE SECRETARY: Judi Allison, Hatrockhounds Gem and Mineral Society, 1701 NW 11th. St., Hermiston, OR, 97882, 541-720-4950, nfmssec@gmail.com

TREASURER: Lyle Vogelpohl, West Seattle Rock Club, 8810 37th Ave. SW, Seattle, WA 98126-3617, (206) 932-3292, nfmstreasurer@comcast.net

NFMS STANDING COMMITTEES

BUDGET: 1st Vice President (see above)

BULLETIN AIDS: Vacant

CIRCULATION: Tom Burchard, Golden Spike Gem & Mineral Society, 875 E 4500 S, S. Ogden, UT 84403, (801) 479-4286, Roxhund@aol.com

COMPETITIVE EXHIBITS:

RULES AND AWARDS CHAIR: Dee Holland, Golden Spike Gem & Mineral Society, PO Box 23, Tendoy, ID, 83468, 208-756-2394

JUDGING DIRECTOR: Bob Gibson, Bitterroot Gem and Mineral Society, 326 Snow Goose Ct., Hamilton, MT 59840, 406-361-0871, gibcott@gmail.com

REGISTRAR: Lauren Williams, Idaho Falls Gem and Mineral Society, 957 E Elva Ave., Idaho Falls, ID 83401, 208-529-6978, slharuir@msn.com

CREDENTIALS: Del & Clara Walker, Central Oregon Rock Collectors, 12377 SE Davis Loop, Prineville, OR 97754, 503-812-6540, cdwalker@q.com

CUSTODIAN: 2ND Vice President: (see above)

DIRECTORY: Carol Willey, Oregon Coast Agate, 929 Ojalla Road, Siletz, OR, 97380, 541-444-1360, going4rocks@outlook.com

ENDOWMENT FUND:

CHAIRMAN: Jack Edwards, Marcus Whitman Gem and Mineral Society 724 S.E. Swainson Lane, College Place, WA, 99324 509-520-1182, jcedwards1475@hotmail.com

TREASURER: NFMS Treasurer (see above)

FINANCIAL ADVISOR: Jim Brain, Spokane Rock Rollers, 6410 W Sundance Dr., Spokane, WA 99208, 509-863-9883, jrbrain233@outlook.com

HISTORIAN: Linda Barlow, Idaho Gem Club, Inc., 3074 W. Newbury Ct, Eagle, Idaho 83616, 208-724-3309, barlow596@gmail.com

JUNIORS CHAIR: Gayle Butler, Columbia-Willamette Faceters Guild and Club at Large 14900 SW 141 Ave. Portland, OR 97224 503-641-5431, Gayles-mail@comcast.net

NEWSLETTER EDITOR: Beth Heesacker, Clackamette Mineral and Gem Corp., 4145 NW Heesacker Rd., Forest Grove OR, 97116, (503) 357-8804, nfmseditor@coho.net

NFMS Club-at-Large: 1st Vice President (see above)

NOMINATING CHAIRMAN: Jim Bosley, Idaho Falls Gem and Mineral, 634 Tyson Ave., Idaho Falls, Idaho, 83401, (208)520-1819, jbosley@cablone.net

NORTHWEST ROCKHOUND RETREAT (Hancock): Lamar Tilgner (Chair), Mt. Hood Rock Club, 200 SE Olvera Ave., Gresham, OR 97080, (503) 666-2905, lstilgner1@frontier.com

PAST PRESIDENTS COUNCIL: Jim Bosley, Idaho Falls Gem and Mineral, 634 Tyson Ave., Idaho Falls, Idaho, 83401, (208)520-1819, jbosley@cablone.net

PUBLIC LANDS ADVISORY: OPEN

SLIDE/ VIDEO LIBRARIAN: Darrell Watkins, Yakima Rock and Mineral Club, P.O. Box 635, Tieton, WA 9894, (509)673-0085, darrell848@aol.com

RESOLUTIONS: Audrey Vogelpohl, West Seattle Rock Club, 8810 37th Ave. SW, Seattle, WA 98126-3617, (206) 932-3292, nfmsjunior@comcast.net

SAFETY: Tanya Sonner, Southern WA. Mineralogical Society, 165 Tingle Rd., Winlock, WA. 98596, (360) 785-3909, chuckagate2@yahoo.com

SCHOLARSHIP: Evelyn Cataldo, Lakeside Gem and Mineral Club, 99509 Brandon, Kennewick, WA, 99338, (509) 628-0170, cataldoevelyn@yahoo.com

SHOW CHAIRPERSON 2018: Ken Junt Yakima Rock & Mineral Club, Inc.; 616 Ferncrest Drive, Yakima WA 98901 (509) 452-4204

SHOW COORDINATOR: Pat Lambert, Lakeside Gem & Mineral Club, 26106 S. Oak, Kennewick, WA 99337, palambert@charter.net

STAMPS: Chuck Sonner, Southern WA. Mineralogical Society, 165 Tingle Rd., Winlock, WA. 98596, (360) 785-3909, chuckagate2@yahoo.com

SUPPLIES: Patty Amos, Mt. Hood Rock Club, 15523 NE 214th Ave., Brush Prairie, WA98606, (360) 892-3716, packrats2@q.com

WAYS & MEANS: Janice Van Cura, Willamette Agate & Mineral Society, Inc., 3448 NW Covey Run, Corvallis, OR 97330 (541)753-2401, jvancura@peak.org

WEBMASTER: Brad Larson, Owyhee Gem and Mineral Society, 6010 W. Cruze St., Boise, ID 83704, 208-465-1920, nfms.webmaster@gmail.com

NFMS SPECIAL COMMITTEES

FIELD TRIP CHAIRMAN: Doug True, Billings Gem & Mineral Club, 2622 Broadwater, Billings, MT 59102, 406.670.0506, dtruefossils12@yahoo.com

ROCKHOUND OF THE YEAR: Laurie Ellis, Hatrockhounds Gem and Mineral Society, PO Box 3326, Irrigon, OR 97844, 541-626-3131, 65shark@gmail.com

WEBSITE CONTEST: Cheri George, charig1946@yahoo.com

AFMS COMMITTEES (NFMS Representatives)

AFMS 5TH VP & AFMS FIELD TRIP –Doug True

ENDOWMENT FUND- Judi Allison

EDITORS HALL OF FAME-OPEN

NEWSLETTER EDITOR-Beth Heesacker

NFMS CLUB BULLETIN AIDS - OPEN

ROCKHOUND OF THE YEAR-Evelyn Cataldo (chair) & Bev Bockman

CONSERVATION & LEGISLATION-OPEN

ALL AMERICAN AWARD- OPEN

INTERNATIONAL RELATIONS-OPEN

JUNIORS PROGRAM-Audrey Vogelpohl

PROGRAM COMPETITION-Darrell Watkins

PUBLIC RELATIONS-OPEN

SAFETY-Chuck Sonner

SCHOLARSHIP FOUNDATION- Evelyn Cataldo

SUPPLIES AND PUBLICATIONS-Patty Amos

JUDGE TRAINING COMMITTEE-Dee Holland

UNIFORM RULES-Dee Holland

WAYS AND MEANS-Lauren Williams (chair) & Janice Van Cura

WEBSITE-Brad Larson

WEBSITE CONTEST – Cheri George

THINGS YOU SHOULD KNOW

The **AMERICAN LANDS ACCESS ASSOCIATION (ALAA)** is a 501(c)(4) organization. Its purpose is to promote and ensure the right of amateur hobby fossil and mineral collecting, recreational prospecting and mining, and the use of public and private lands for educational and recreational purposes; and to carry the voice of all amateur collectors and hobbyists to our elected officials, government regulators and public lands managers. Your annual individual/couple membership fee is \$25 which helps support their activities. Club membership is \$50 per year. Send to Treasurer, P.O. Box 54398, San Jose, CA 95154. Make checks payable to: American Lands Access Assn. Applications can be downloaded at: www.amlands.org on the left side of the page. For more information contact: Doug True, Billings Gem & Mineral Club, 2622 Broadwater, Billings, MT 59102, 406.670.0506, dtruefossils12@yahoo.com

The **AFMS NEWSLETTER** is published monthly except Jan-Jul-Aug by the American Federation of Mineralogical Societies. Each NFMS member club should have three people (usually the Pres, Secretary, and Editor) receiving the AFMS Newsletter. If they are not, or if anyone else wants to subscribe (\$4.50 per year). Contact: AFMS Central Off., Steve Weinberger, P.O. Box 302, Glyndon, MD 21071-0302 cebar62@aim.com Make checks payable to "AFMS".

The **NORTHWEST NEWSLETTER** is the official publication of the Northwest Federation of Mineralogical Societies (NFMS) and is usually published ten (9) times per year. This publication is brought to you through your club membership in the NFMS. The purpose of the Northwest Newsletter is to keep all NFMS members informed of activities and events pertaining to the business and services of the Federation. The Newsletter is printed and mailed to approximately 3,500 homes in six states by Oregon Lithoprint in McMinnville, Oregon.

For matters related to the Newsletter (i.e. content, advertising, etc.) contact the Newsletter Editor. For matters related to the Newsletter circulation (new members, address changes, etc.) contact Circulation.

SHOW COORDINATION. Your Federation provides a free service for NFMS members by listing your show in this Newsletter, on the NFMS website, two magazines ("Rocks and Minerals" and "Rock and Gem") and the on-line calendar from "Lapidary Journal". Please provide the date and time for the show, the club name and show title (if applicable), the location of the show, admission price, and most important a contact person with address, e-mail address and/or phone (e-mail is preferred). Please send your show information four to six months in advance to the Show Coordination Chairperson. If you see an error once your show is listed, or if your show is not listed, contact the Newsletter Editor.

SAVE STAMPS PROGRAM. NFMS members are encouraged to use and save commemorative stamps. The money generated from the sale of these used (cancelled) stamps is then donated to Cancer Research. The collected stamps can be sent to the **Stamps Chairman**, brought to the NFMS Annual Show or given to your Federation Director in your club.

ATTENTION CLUB TREASURERS**Where to send your money**

To NFMS Treasurer for:

1. Dues and supplies
2. Donations for the general fund
3. Donations to Junior Achievement
4. Advertisement in this Newsletter

Send to: Lyle Vogelpohl, see Treasurer this page.

To NFMS Endowment Fund Treasurer for:

1. Donations to Endowment Fund
2. Memorial contributions

Make check payable to NFMS Endowment Fund, send to Endowment Fund Treasurer, 8810 37th Ave SW, Seattle, WA 98126-3617

To NFMS Scholarship Chairperson for:

1. Donations to AFMS Scholarship Fund
2. Memorial contributions to AFMS Scholarship

Make check payable to AFMS Scholarship Fund.
Send to: Evelyn Cataldo (see Scholarship this page).

To AFMS Endowment Fund for:

1. Donations to AFMS Endowment
2. Memorials

Send to: See AFMS Newsletter

To ALAA Treasurer for:

- Memberships, new and renewals
- Donations
- Make check payable to ALAA (American Lands Access Assn) Treasurer, P.O. Box 54398, San Jose, CA 95154

NFMS WEB SITE: www.amfed.org/nfms or
<http://northwestfederation.org/>

NFMS NEWSLETTER AND WEBSITE ADVERTISEMENT

Members, Non-members, clubs, etc. can advertise in the Northwest Newsletter. This service is provided to help defray the cost of printing and mailing the newsletter and is encouraged by the Federation. The only criteria for the ad is that it be hobby related (e.g. rocks, equipment, grit, shows, etc.).

Ads for the Northwest Newsletter are
\$1.50 per square inch.

Example: 3" x 4" ad = 12 inches
12 inches x \$1.50 = \$18 per issue of the Newsletter

For an additional 50% of the cost of the Newsletter ad, you can have the same ad placed on the NFMS website for the same length of time. The Newsletter ad must be purchased to receive this additional advertisement.

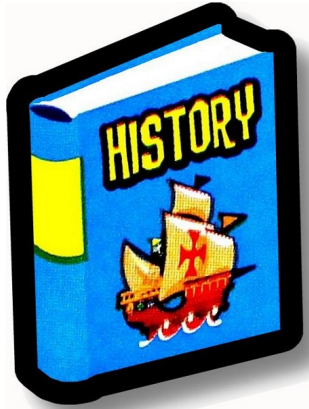
Do not send ads on colored paper because the background will look gray in the ad. The Editor will send a billing statement to the customer which will include instructions to make payment to the NFMS Treasurer. For more information or questions, call, e-mail or write the **Newsletter Editor**

**See the NFMS on Facebook**

<https://www.facebook.com/groups/NFMS1>
(for the desktop/laptop/tablets)
<https://m.facebook.com/groups/NFMS1>
(for mobile devices like phones)

(continued from page 1)

I have heard of another one as especially effective, based on interviews with the show chairperson of the Turlock CA annual summer show in 2017: small show notices made available for distribution to students by classroom teachers at local area schools. From personal experience, by far one of the most effective in attracting new and repeat local-area attendees has been placement of wire-framed, plastic "stick-in-ground" signage (about 24" x 18") posted strategically several days before the show at key intersection corners, along main access roads into the community, and along prominent commuter-used streets/roads. These signs can be collected the late-afternoon of the show's last day. They are an expense, but can be reused each year if printed with generic show info text. Of course, you'll need permission if posting on private land or at business sites (mentioning your non-profit status and educational mission helps), and you'll need to understand any local-agency sign-posting restrictions. Once you develop and execute your own club's advertising plan, build a list of these methods and add items such as "word-of-mouth," "heard from a club member," "other," etc., and have someone at or near the show entrance table area ask attendees how they heard about the show and mark the response on your tally sheets, one for each separate show day. Over a 2-day show period, approximately 300+ responses can probably be gathered without impeding entrance ticket sales. The data will be revealing, can often settle age-old arguments and opinions about which methods work best, and can -- for sure -- inform next year's planning.



NFMS HISTORIAN

By Linda Barlow

THE AMERICAN GOLDEN TOPAZ

WORLD'S LARGEST FACETED GEMSTONE

Topaz is often found in superb crystals that range in size from micro-scopic to very large, with some giants weighing as much as several hundred pounds. Most of these crystals, especially the larger ones, are colorless. When cut and polished they can be very brilliant. Although crystals of gem-quality topaz are found throughout the world, the blue ones from Russia and the yellow, amber, blue and colorless ones from Brazil are best known. At the present time, Brazil is the major source of these stones.

The size of a gemstone is indicated by its weight given in carats. In these terms, the American Golden Topaz, a rectangular cushion-cut stone – as large as an automobile headlight - is the world's largest faceted gemstone. It has 172 facets and weighs 22,892.5 carats (12.3 pounds). It has an overall width of 149.2mm with a table facet that is 105.3mm long and 93.7mm across.

The rough 26 pound Brazilian topaz, from which this gem was cut, was acquired by Drs. Marie and Ed Borgatta of Seattle, Washington through a U.S. dealer in the early 1970's. The surface of the stone was so cobbled and abraded that it had no beauty in its natural state. As Ed Borgatta studied the color and other interesting characteristics of the rough crystal, he realized the stone could be cut and polished into a single topaz of extraordinary size, weight, and beauty for museum display. Ed roughed out the gem in 1975, giving it the rectangular shape in which it was eventually cut. At that point, he decided that finishing the job of faceting and polishing the huge gemstone probably would require more time and possibly more skills than he possessed. In 1984, the Borgatta's entrusted the responsibility of faceting the stone to Leon Agee of Walla Walla, Washington. Agee, an assistant manager of a jewelry store, completed the faceting and polishing of the topaz over a period of two years, doing the work at night and on weekends. Special equipment had to be built to counterbalance the weight of the stone on the cutting lap, adding considerably to the expense and time required to complete the faceting and polishing.

The finished stone was presented to the Smithsonian Institution on May 4, 1988. To make the donation to the Smithsonian possible, the six regional federations of mineralogical societies, representing 60,000 amateur rock hobbyists nationwide, conducted an informal fund-raising effort to partially pay for the topaz. The balance was contributed to the Smithsonian by the Borgattas.

The topaz was placed on exhibit in the Museum of Natural History's Gem Hall in the "Gemstone Giants" case, a display of huge, variously colored specimens. The new topaz is more than three times larger than any of the other specimens in the case, several of which are the largest cut stones known for their species. (News Release, Smithsonian Institution, May 4, 1988)

ROCKS Needed

The Northwest Federation show will be in Yakima, April 27th-29th. The silent auction is asking for donations of rock for the sale. Anything would be appreciated.

The Yakima club and the Northwest Federation are splitting the proceeds this year, so any donation of work or material would be greatly appreciated.

Thank you,
Jerry Wickstrom
Yakima Rock & Mineral Club President
Silent Auction Chairman



Aquamarine From Chumar Bakhor Display

Summyar Valley, Nagar Pakistan

The aquamarine crystals and crystal plates from the Chumar Bakhor mines in Pakistan are arguably some of the very best in the world. They are found high in the Hindu Kush Mountains at an altitude of 18,000 feet. For us locals that would be 4,000 feet higher than Mt. Rainier. All supplies are packed in on horses with the final trek being done on the backs of the miners. Many miners dies each season due to accidents and altitude related health issues. Due to the altitude the mining season is confined to about three months in the summer.



The Yakima Club is honored to be able to display specimens that are coming directly from the mining community in the Summyar Valley. It is hoped that we all appreciate the time, effort, and sacrifice these hardy people have invested in bringing these specimens to the greater world.

(At this time this feature display is tentative and depends on the miners being able to successfully ship specimens to us)

OUR SCHEDULE!

80th Anniversary Northwest Federation of Mineralogical Societies' Show & Convention 2018 Schedule

Wednesday April 25

7 am - Gate 5 Opens
8 am Set-up begins
8 am Check-in - Modern Living Building
12 pm Lunch - Modern Living Building
5:30 pm - Pizza & Pie - Pioneer Hall
7:30 pm - Lock up

Thursday April 26

7 am - Gate unlocks
7:30 am - Buildings open - Check in Modern Living Building
7:30 am - Dealer's Set-up
8 am - Competition and Non-Competition Display Set-ups start (8 am-8 pm)
9 am - Demonstrators, Feature Displayers, and Activity Stations set-up
2 pm - Hotel Check-in at Best Western
3 pm - Junior Display Case Set-up Modern Living Building
4 pm - Junior FRA Program - Pioneer Hall
6:30 pm - Potluck - Dealers/Displayers/Demonstrators/Volunteers - State Fair Park Trailer Park
8 pm - Lock-in starts - Security team on site

Friday April 27

7 am - Gate 5 Opens
7:45 am - Buildings Unlock for Dealers, Judges & Volunteers
8 am - Judges Meeting - Modern Living Building
9:30 am - Volunteers start time. Morning Meeting - Pioneer Hall
10 am - Show Opens, School Groups Arrive
10 am - NFMS Endowment Fund Committee - Pioneer Hall/Upper Level
11 am - See schedule for Presenters
3 pm - NFMS Executive Meeting - Pioneer Hall
4 pm - NFMS Annual Meeting - Pioneer Hall
6:30 pm - Lock-in Starts - Modern Living Building
9 pm - Lock-in Starts - Pioneer Hall

Saturday April 28

7 am - Gate 5 Opens
8 am - All Editors' Breakfast @ Ahtanum Best Western Conference Room
9 am - Building opens for Dealers/Volunteers
9:30 am - Morning Announcements - Pioneer Hall
10 am - Show Opens
9 am -1:30 pm - Students Jewelry Making Demonstrations - Modern Living Building
11 am - See schedule for Presenters
12 pm - Officers/Committee Chairperson, Judges, & Past Presidents Luncheon @ Ahtanum Best Western
2 pm - Metalsmithing Class Starts - Modern Living Building
6:30 pm - Modern Living Building Closes
6 pm - Social / 6:30 pm - Banquet/ 7:30 pm - No Dinner ticket guests welcome/Pioneer Hall

Sunday April 29

7 am - Gate 5 Opens
7:30 - 9 am Dealer's Breakfast includes all Volunteers, Dealers, & Speakers
8:30 am - Juniors Cracker Barrel - NFMS Darryl Powell "Building and Maintaining a Vibrant and Fun Juniors Program" - Pioneer Hall
9:30 am - Morning Meeting - Modern Living Building
10 am - Show Opens
10 am - Metalsmithing Class - Modern Living Building
11 am - See schedule for Presenters
2 pm - Live Auction NFMS
4 pm - Raffle Prize Awards
5 p.m. Show Closes



Display of Ellensburg agate from the Robert Langford collection



Display of Oregon Sunstone from the Pana Mine and others including sunstone jewelry (Robin Callahan) and carving (Dalan Hargrave)



Saturday April 28

7 am - Gate 5 Opens
8 am - All Editors' Breakfast @ Ahtanum Best Western Conference Room
9 am - Building opens for Dealers/Volunteers
9:30 am - Morning Announcements - Pioneer Hall
10 am - Show Opens
9 am -1:30 pm - Students Jewelry Making Demonstrations - Modern Living Building
11 am - See schedule for Presenters
12 pm - Officers/Committee Chairperson, Judges, & Past Presidents Luncheon @ Ahtanum Best Western
2 pm - Metalsmithing Class Starts - Modern Living Building
6:30 pm - Modern Living Building Closes
6 pm - Social / 6:30 pm - Banquet/ 7:30 pm - No Dinner ticket guests welcome/Pioneer Hall



Display of wire gold from the Rice Museum



NFMS Annual Convention Special Interest Meetings

NFMS Endowment Fund Committee Friday April 27, 10 a.m. - noon @ State Fair Park/Pioneer Hall-Upper Level

NFMS Executive Meeting Friday, April 27, 3 p.m. @ State Fair Park/Pioneer Hall

NFMS Annual Meeting Friday, April 27, 4 p.m. @ State Fair Park/Pioneer Hall

All Editors' Breakfast Saturday, April 28, 8 a.m. @ Ahtanum Best Western Conference Room - Darryl Powell to speak

Officers/Committee Chairperson, Judges, & Past Presidents Luncheon Saturday, April 28, Noon @ Ahtanum Best Western Conference Room

Social (No Host) Saturday, April 28, 6 p.m. **Awards Dinner** 6:30 p.m. @ State Fair/Park Pioneer Hall

NFMS Juniors Cracker Barrel Sunday, April 29, 8:30 a.m. @ Pioneer Hall





After Show Fieldtrip

Plans are in the works for the Yakima Club to host a two day field trip to collecting sites in Oregon after the show is over on April 29, 2018. Places we would visit would include the Polka Dot Agate Mine and Richardson's Ranch. On day one we would travel to the Polka Dot Agate Mine where you can dig for thundereggs from the new Canyon's Rim deposit and check out material from the agate mine and also material from the Blue Mountain Jasper and Amethyst Sage claims that Dale will have on hand.

After that we will stay overnight in Madras. those with campers can stay at the Fairgrounds or if you don't have a camper you can make arrangements to stay at one of the motels in town. The next day we will visit Richardson's Rock Ranch and go dig thundereggs from the Blue Bed, Red Bed, and Priday Moss Bed (weather permitting). Richardson's has a large stock of rough agates, jaspers, petrified wood, and other goodies from all over the world you can go through also. Check out the March 2018 and February 2018 issues of Rock and Gem magazine for articles that highlight these locations.

We will also be putting together detailed information on how you can get to Glass Butte (obsidian) and the McDonald Ranch (petrified wood and thundereggs) if you would like to extend your stay and check out some other localities. Details of when we will be leaving and last minute trip itinerary will be handed out at the show.

Yakima Valley Museum

Arrangements are being made for show goers to visit a really spectacular display of petrified wood from a local deposit found and excavated by Clyde Friend. These beautifully preserved specimens were found buried upright in a lava flow that was part of one of the largest eruptions of basalt in history. Expertly cut and polished rounds are on display as are mostly whole trees from the deposit.



From the Editor's Rockpile

By Beth Heesacker


Happy Spring from Forest Grove, Oregon. The trees are breaking out with buds and blossoms. The daffodils are blooming. The lawn is turning green. I am so delighted with the arrival of Spring this year for some reason. Maybe it is because we did not get to travel this winter so the change of the season is very welcome.

The changes are also heralding the approach of the NFMS Convention in Yakima. As Ronnie mentions in her article the fruit trees are starting to bloom there. The Yakima Valley has wonderful fruit trees but I do not know if there will be any still blooming at the end of next month. Even if not the green of the leaves will be a welcome sight. I have been through Yakima in the past and found it a beautiful place. Another place to visit while there is just a few miles north of Yakima. Toppenish is a small town that has some of the most beautiful wall murals I have ever seen. They are everywhere you look. I challenge you to find all of the almost 100 murals in town.

See you in Yakima !!!

NFMS 80th Anniversary Show & Convention
Central Washington State Fairgrounds
Modern Living Building and Pioneer Hall
1301 Fair Ave, Yakima WA
April 27-29, 2018





Oregon Treasures

Ahoy Mates, find your treasures at Umpqua Gem & Mineral Club's 48th Annual Rock & Gem Show

Saturday, May 5 – 9am to 5pm
Sunday, May 6 – 10am to 4pm
Douglas County Fairgrounds
2110 Frear Street
I-5 exit 123 * Roseburg, OR
FREE Admission – donations appreciated
Food Concessions by
IdleYld Lodge Snack Shack

DON'T MISS THE FUN!
Gem and Mineral Displays
Rock and Jewelry Dealers
Demonstrations
Door Prizes * approx. every ½ hr.
Silent Auction * Raffle Prizes
FREE Kids' Activities:
Rock Hunts: Sat: 11am * 1pm * 3pm
Sun: 1pm * 3pm
Rock Painting with **Michael's**

2,3,4/18

Collectors Sale

Selling collections of rocks, minerals, fossils, and finished pieces

April 7th, 9:00 am-5:00 pm
824 S. Green St. , Kennewick WA.
Contacts 509-539-0930 or 509-539-6402.

3/18



California Mineral Society

Interactive Displays

The California Mineral Society will be bringing up two interactive displays for the show. We are delighted that they are willing to travel so far to participate. One of their displays is on how volcanoes work and the other is on metamorphic and sedimentary rocks and how they form.



2018 GEM SHOW

Hosted By Lakeside Gem & Mineral Club
22nd Annual Show

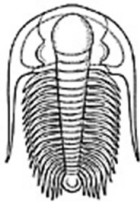
Saturday, April 21st – 10 am to 5 pm

Sunday, April 22nd – 10 am to 4 pm

Benton County Fairgrounds
1500 S. Oak St., Kennewick, WA



Adult Admission \$5 (good for both days)
Children 14 and under FREE
with paid adult admission



Events & Activities Include:

- 40+ Collectors' Exhibits
- Great Door Prizes
- Gem, Mineral, Fossil & Jewelry Dealers
- Fluorescent Displays
- Kid's Korner – Games & Crafts
- Silent Auctions
- Geode Cracking

Demonstrations Include:

- Cabochon Fashioning
- Gemstone Faceting
- Gem Trees
- Sphere Making
- Silversmithing
- Wire Wrapping
- Jewelry Fabrication

Tailgating – Sunday 8:00am to 2:00pm

Bring This Flyer To The Show For
\$1.00 Off Price Of Admission
(Good for One Person per Flyer)

2,3/18



Rockhound of the Year

By Laurie Ellis
Rockhound of the Year
Chairperson

Clackamette Mineral and Gem Club of Oregon City, Oregon proudly presents Duane Flackus as our 2018 Rockhound of the Year. Duane has been a member of CMGC since 2009.

He became program chairman and has held that position since. Program chairman is responsible for choosing the demonstrations, lectures and presentations at our monthly meetings. These programs are educational in nature and benefit both our members and visitors. He has done an excellent job finding interesting and diverse lapidary related topics.

Duane has been making monthly contributions to our Newsletter in the form of his award winning cartoons for the past 4 years. On top of this he just joined our board this year as a member at large.

Duane is an integral part of our club and we are fortunate to have him as a member.



NFMS WEBSITE CONTEST

By Cheri George
NFMS Website Contest Chairman

Thank you to all our hardworking Webmasters who entered the Website Contest this year. I will be presenting awards at the NFMS show in April.



2,3/18



Saturday
March 31
10:00-6:00

Sunday
April 1
10:00-5:00

70th Annual
OLD SHOW NEW ROCKS
1948 - 2018

SWEET HOME GEM & MINERAL SHOW

- Raffle
- Displays
- Dealers
- Snack Bar
- Door Prizes
- Demonstrations
- Handicap Parking

Admission 50¢

Children 12 and under - FREE when accompanied by an adult

1641 Long Street, **High School Gym**, Sweet Home OR

For more information call Show Chairman 541-451-2740 or 541-451-1577

Facebook Sweet Home Rock & Mineral Club

IMPORTANT NOTICE

Please submit all membership and address changes to Tom Burchard, Circulation Chair, and to Carol Willey, Directory Chair. Their contact information can be found on the second page of this newsletter.

You **MUST** submit all show information (including admission charge) to Pat Lambert, Show Coordinator. **FUTURE SUBMISSIONS MADE DIRECTLY TO THIS EDITOR WILL BE IGNORED!**

Pat's information can be found on the second page of this newsletter.

THANK YOU.



NFMS Clubs' Show Schedule

March 31 & April 1 Sat - 10 - 6 Sun - 10 - 5	Sweet Home Rock and Mineral Society	Sweet Home High School Gym, 1641 Long Street, Sweet Home OR	Ed Anderson 541 451 1577 ela4rocks@gmail.com or Bob Rose, bobrasay@gmail.com
April 7 & 8 Sat - 9 - 5 Sun - 10 - 3	Springfield Thunderegg Rock Club	Goshen Grange 85628 Dillard Access Rd. Eugene, OR 97405	Trish Adams cadnshac2@comcast.net 541 517-3617
April 7 & 8 Sat - 10 - 5 Sun - 10 - 5	South East Idaho Gem and Mineral Society	North Bannock County Frgrnds, 10588 Fair-ground Dr., Pocatello ID 83201	Larry Manhart mlarry13@msn.com 208 705 7273
April 13, 14, & 15 Fri - 9 - 6 Sat - 9 - 6 Sun - 10 - 4:30	Willamette Agate and Mineral Society	Polk County Fairgrounds 520 S Pacific Hwy W Rickreall, OR 97371	Mimi Surgeon PO Box 13041 Salem OR 97309 wams.riverofgems@gmail.com www.WAMSI.net
April 13, 14, & 15 Fri - 9-6 Sat - 10 - 6 Sun - 10 - 4	Golden Spike Gem and Mineral Society	Golden Spike Event Center Weber County Fairgrounds 1000 N 1200 W Ogden UT 88440	Deborah Blake 385 205 9187 gemshow@goldenspikegem.org
April 14 & 15 Sat - 9 - 5 Sun - 10 - 5	Maplewood Rock and Gem Club	Maplewood Rock and Gem Clubhouse, 8802 196 th ST SW, Edmonds WA	Mary Ann Collins 206 714 3922 collmal@comcast.net
April 21 & 22 Sat - 10 - 5 Sun - 10 - 4	Lakeside Gem and Mineral Club	Benton County Fairgrounds 1500 South Oak Kennewick WA	Mary Lou Omstead 509 783 2798 PO Box 6652 Kennewick WA 99336
April 21 & 22 Sat - 10 - 6 Sun - 10 - 5	Idaho Falls Gem and Mineral Society	Idaho Falls Recreation Center, Corner of Memorial Drive and B Street, Idaho Falls ID	Randy Okopny ifrockhounds@gmail.com 208-529-8195 http://ifrockhounds.com
April 27 - 29 NFMS Show and Convention Fri - 10 - 6 Sat - 10 - 6 Sun - 10 - 4	Yakima Rock and Mineral Club	Central WA State Fair Park Modern Living Building and Pioneer Hall 1301 South Fair Avenue Yakima WA 98901	Ken Junt or Ronna Watkins yakima_rockhounds12@yahoo.com 509 433 7841 Yakima Rock and Mineral Club PO Box 326 Ya-kima WA 98907 www.yakimarockclub.com www.facebook.com/YakimaRockandMineralClub
April 27, 28, & 29 Fri - 10 - 5 Sat - 10 - 5 Sun - 10 - 4	Mt Hood Rock Club	Jackson Armory 6255 NE Cornfoot Road Portland OR 97218	Wayne King mhredc@gmail.com , WFKClassicWoods@aol.com 503-284-7915 www.mthoodrockclub.com
April 28 & 29 Sat - 10 - 5 Sun - 10 - 5	West Seattle Rock Club	Alki Masonic Temple 4736 40 th Avenue SW Seattle WA	Diane Christensen dchristensen59@gmail.com 206 582 2267, www.westseattlerockclub.org
April 28 & 29 Sat - 10 - 5 Sun - 10 - 4:30	Grays Harbor Gem and Geology Society	Elma County Fair and Event Center 43 Elma-McCleary Road Elma WA	Gary Emberley 624 Fairmont Place Aberdeen, WA 98520 360 533 6196 melissa624@hotmail.com
May 5 & 6 Sat - 9 - 5 Sun - 10 - 4	Umpqua Gem & Mineral Club	Douglas County Fairgrounds I-5 Exit 123 Roseburg OR	Jim Barber PO Box 1264 Roseburg OR 97470 541 378 8264 www.facebook.com/Umpquagem
May 5 & 6 Sat - 10 - 6 Sun - 10 - 5	Everett Rock and Gem Club	Everett Community College Walt Price Student Fitness Center, 2206 Tower Street Everett WA	John Peterson 425 402 9227 PO Box 1615 Everett WA 98206 Website: www.everettrockclub.com
May 12 & 13 Sat - 10 - 6 Sun - 10 - 4	Bozeman Gem and Mineral Club	Gallatin County Fairgrounds Building #1, 901 North Black Bozeman MT	Brad Somers, 406-548-1776 or Linda Johnson, 406-580-3419 bgmcmnt@gmail.com
May 12 & 13 Sat - 10 - 5 Sun - 10 - 5	Hatrockhounds Gem and Mineral Society	NEW LOCATION Eastern Oregon Trade and Event Center, 1705 East Airport Road, Hermiston, OR	Mike Filarski, 541 571 2593 stonemorlin1@netscape.net
May 19 & 20 Sat - 10 - 6 Sun - 10 - 4	Bitterroot Gem and Mineral Society	Ravalli County Fairground 100 Old Corvallis Road Hamilton MT	Deb Strickland mtpiper@gci.net 406 363 3194
May 26 & 27 Sat - 10 - 5:30 Sun - 10 - 4:00	Oregon Coast Agate Club	National Guard Armory 541 SW Coast Hwy, Hwy 101, Newport OR 97365	George Mazeika 541 991 0311 george-maze58@gmail.com PO Box 818, Yachats OR 97498
June 1, 2, & 3 Fri - 10 - 5 Sat - 10 - 5 Sun - 10 - 5	Puyallup Valley Gem and Mineral Club	Swiss Park 9205 198 th Avenue East Bonney Lake WA 98390	Nancy LeMay beesknees369@gmail.com PVGMC, % Club Show, PO Box 134 Puyallup WA 98371 info@puyallupgemclub.org
June 2 & 3 Sat - 9 - 5 Sun - 10 - 4	North Idaho Mineral Club	Kootenai County Frgrnds 4060 North Government Way, Coeur d'Alene ID	Mike Rose Showchair2018@gmail.com . PO Box 1643 Hayden ID 83835
June 9 & 10 Sat - 10 - 5 Sun - 10 - 5	Butte Mineral and Gem Club	Butte Civic Center Annex 1340 Harrison Avenue Butte MT	Pete Knudsen 406 490 5828 PO Box 4492 Butte MT 59702
June 15 - 17 Fri - 10 - 5 Sat - 10 - 5 Sun - 10 - 4	Lower Umpqua Gem & Lapidary Society	Reedsport Community Building 451 Winchester Avenue Reedsport OR	Bill Hendrickson 541 271 6816 AgateLicker44@outlook.com Website: ReedsportRockandGemShow.com
August 3, 4, & 5 Fri, Sat - 10 - 5 Sun - 10 - 4	Far West Lapidary & Gem Society	North Bend Community Center, 2222 Broadway North Bend OR	Don Innes 541 396 5722 don-innes.innes20@gmail.com
August 4 & 5 Sat - 10 - 5 Sun - 10 - 5	Darrington Rock and Gem Club	Mansford Grange 28806 463rd Avenue NE Darrington, WA	Troy Lehman 360 391 1153 littleexplorers@juno.com
August 11 & 12, Sat - 9 - 5 Sun - 10 - 5	Maplewood Rock and Gem Club	Maplewood Rock and Gem Clubhouse, 8802 196 th ST SW, Edmonds WA	Mary Ann Collins 206 714 3922 collmal@comcast.net
September 8 & 9 Sat - 9 - 5 Sun - 10 - 4	Clallam County Gem and Mineral Association	Vern Burton Community Center 308 East 4 th Street Port Angeles WA	Kathy Schreiner 360 681 3811 or Kathy Bachman 360 681 3994 PO Box 98 Sequim WA 98382

NFMS Clubs' Show Schedule

September 8 & 9 Sat - 10 - 5 Sun - 10 - 5	Marcus Whitman Gem and Mineral Society	Walla Walla County Frgrnds. Community Center Bldng., 363 Orchard St. Walla Walla, WA	Jack L Edwards, cell 509-520-1182, jcedwards1475@hotmail.com
September 15 & 16 Sat - 10 - 5 Sun - 10 - 4	Southern Washington Mineralogical Society	Castle Rock Fairgrounds 120 Fair Lane Castle Rock, WA	Robert Klickman & Nicole Doiron 360-785-4417 PO Box 679 Winlock WA 98596
September 22 & 23 Sat - 10-6 Sun - 10-4	Cascade Mineralogical Society	Green River College Student Union Building 12401 SE 320 th Street Auburn, WA	Mark Hohn, 32009 199th Ave. SE, Kent, WA 98042, (253)-332-3736, showchair@cascademineralogicalsociety.org , www.cascademineralogicalsociety.org
October 12 - 14, Fri - 10 - 6 Sat - 10 - 6 Sun - 10 - 5	Portland Regional Gem & Mineral Show Association	Washington County Fair Complex, 873 NE 34 th Ave., Hillsboro, OR 97124	Linda Harvey lindaharvey2010@gmail.com 503-310-3036., PO Box 5401 Portland, OR 97228 www.PortlandRegionalGemandMineral.com
October 27-28 Sat: 9 - 6 Sun: 10 - 5	Clackamette Mineral and Gem	Clackamas County Fair-grounds, 694 NE 4th Ave, Canby, OR 97013	Beth Heesacker, heesack-er@coho.net , 4145 NW Heesacker Rd., Forest Grove, OR 97116
October 27 & 28 Sat - 10 - 6 Sun - 10 - 5	Bellevue Rock Club	Vasa Park 3560 West Lake Sammamish PKWY SE Bellevue, WA 98008	Bruce Himko PO Box 1851 Bellevue, WA 98009 bellevuerockclub@comcast.net
November 10 & 11 Sat - 9 - 5 Sun - 10 - 5	Maplewood Rock and Gem Club	Maplewood Rock and Gem Clubhouse, 8802 196 th ST SW, Edmonds WA	Mary Ann Collins 206 714 3922 collma1@comcast.net
December 8 & 9 Sat - 9 - 5 Sun - 10 - 5	Maplewood Rock and Gem Club	Maplewood Rock and Gem Clubhouse, 8802 196 th ST SW, Edmonds WA	Mary Ann Collins 206 714 3922 collma1@comcast.net

