



NORTHWEST NEWSLETTER



Northwest Federation of Mineralogical Societies
Tom Burchard, Circulation
875 E 4500 S
S Ogden, UT 84403-2913

VOLUME 52, NO. 5 Northwest Federation of Mineralogical Societies

MARCH 2012



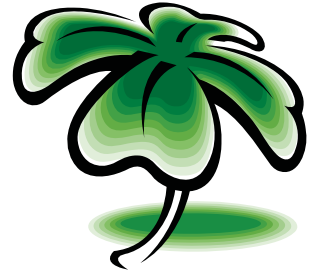
Judi Allison President

My, how time flies when you're having fun!!! There's only one more newsletter before the Annual Show and Convention in Kennewick. Some of you may have noticed that there is no information for a midyear meeting. We have put aside a midyear meeting for 2012 because the show is in May, just a short month after when we usually have our midyear meeting. Most probably, the midyear meetings will resume next year when our annual show will be in August.

That being said, remember that you need to submit the name of your Club Directors and Delegates to the Credentials Committee prior to the annual meeting that will be on Friday, May 18th at 4:00 pm. The meeting is a bit earlier than some years. The hope is that we can

dispense with the business at hand so that attendees can have time to relax, enjoy our fair city and partake of the culinary delights it has to offer after the meeting.

I also want to urge folks to bring items for our auction so that we can have a nice collection for sale. The Mount Hood Club has consented to run the auction as they have in the past. They do a really good job of helping raise money for our Federation with this endeavor and true spirit of volunteerism, so remember to check those nooks and crannies and bring along those lonesome pieces that never got your attention. Keep in mind, please, bring good, clean material, as that is what will sell. If you wouldn't want to buy it, chances are, no one else would either. And, thanks in advance for your contributions. I'll be seeing you soon in Kennewick!!!



Non-Profit Org.
U.S. Postage Paid
Barley ID 83318
Permit No. 9



Mark Your Calendars:

2012 NFMS Annual Meeting
May 18-20
Hosted by Lakeside Gem and Mineral Club
Benton County Fairgrounds,
Kennewick, WA

2013 NFMS Annual Meeting
August 16-18
Hosted by Butte Mineral and Gem Club
Butte Civic Center, 1340
Harrison Ave.
Butte, Montana

2014 NFMS Annual Meeting
Hosted by Hatrockhounds
Gem and Mineral Society
in Pendleton, OR

What's Inside:

President's Report	1
1 st VP's Report	3
Judge's training	3
Editor's Rockpile	3
Juniors Page.....	4
For Teachers	5
Beach Agate Alert	6
Rockhounds of the Year	6
NFMS Show and Meeting	7-11
AFMS News.....	11
Rock Show Calendar	12

APRIL NEWSLETTER ARTICLES
ARE DUE ON
MARCH 15th

Contact
Beth Heesacker
Email: nfmseditor@coho.net

NFMS Website:
www.amfed.org/nfms

NFMS EXECUTIVE OFFICERS 2010-2011

PRESIDENT: Judi Allison, Hatrockhounds Gem & Mineral Society, 1701 NW 11th #A, Hermiston, OR 97838, (541) 720.4950, jall@eotnet.net

1st VICE PRESIDENT: Kathy Moedl, Idaho Falls Gem and Mineral Society, 149 E. 1st N, Rexburg, ID 83440, (208) 356-4169, kmoedl@cablcone.net

2ND VICE PRESIDENT: Don Innes, Far West Lapidary, 54416 Arago-Fishtrap Rd., Myrtle Point, OR 97458, (541) 396-5722, donin11@hughes.net

EXECUTIVE SECRETARY: Joan Day, Golden Spike Gem & Mineral Society, 509 Highland Blvd., Brigham City, UT, 84302, (801) 391-2912, joanday@sisma.com

TREASURER: Lyle Vogelpohl, West Seattle Rock Club, 8810 37th Ave. SW, Seattle, WA 98126-3617, (206) 932-3292, nfmstreasurer@comcast.net

NFMS STANDING COMMITTEES

BUDGET: Kathy Moedl, 1st Vice President (see above)

BULLETIN AIDS: Peggy Blickfeldt, Idaho Gem Club, 236 Tollgate Rd., Boise, ID 83716, (208) 345-8774, grumpies@q.com

CIRCULATION: Tom Burchard, Golden Spike Gem & Mineral Society, 875 E 4500 S, S. Ogden, UT 84403, (801) 479-4286, Roxhund@aol.com

COMPETITIVE EXHIBITS:

EXHIBITS REGISTRAR: Dee Holland, Bitterroot Gem/Mineral Soc, Hamilton, MT, P.O.Box 23, Tendoy, ID, 83468, (208) 756-2394, beauholland@centurytel.net

JUDGING DIRECTOR: Carol Cimolino, Everett Rock and Gem Club, 1429 Avenue D, PMB 518, Snohomish, WA 98290, (360)668-0378

RULES & AWARDS CHAIR: Larry Hulstrom, Lakeside Gem and Mineral Club, Kennewick, WA, 5409 W 26th, Kennewick, WA 99338, (509)783-6210, rockhound132@charter.net

CREDENTIALS: Del & Clara Walker, Tualatin Valley Gem Club, 12377 SE Davis Loop, Prineville, OR 97754, (541) 447-7826, dwalker@embarqmail.com

CUSTODIAN: Don Innes, 2nd Vice President (see above)

DIRECTORY: Carol Willey, Oregon Coast Agate, 929 Ojalla Rd., Siletz, OR 97380, (541)444-1360, going4rocks@dishmail.net

EDUCATION: Jim & Libby Spencer, Clackamette Mineral & Gem Society, 660 Collins Crest, Gladstone, OR 97027, (503) 650-5027, the_spencers@comcast.net

ENDOWMENT FUND: CHAIRMAN: Edna Nelson, Mt Hood Rock Club, 66830 Maple Crest Rd., Deer Island, OR 97054, (503) 397-5284, rockhoundstoo1966@yahoo.com
TREASURER: NFMS Treasurer (see above)

FINANCIAL ADVISOR: Jon Spunaugle, 4841 Doctor Eldridge Dr., Washougal, WA 98671, (360) 624.7604, jonspe@comcast.net

HISTORIAN: Shirley Leeson, Bitterroot Gem/Mineral Soc, Hamilton, MT, P.O. Box 23, Tendoy, ID., 83468-0023, (619) 460-6128 or (208) 756-2394, beauholland@centurytel.net

JUNIORS CHAIR: Audrey Vogelpohl, West Seattle Rock Club, 8810 37th Ave. SW, Seattle, WA 98126-3617, avogelpohl@comcast.net

NEWSLETTER EDITOR: Beth Heesacker, Clackamette Gem & Mineral Corp., 4145 NW Heesacker Rd., Forest Grove OR, 97116, (503) 357-8804, nfmseditor@coho.net

NFMS Club-at-Large: 1st Vice President (see above)

NOMINATING CHAIRMAN: : Fritz Mack, Everett Rock & Gem Club, 10619 Holly Dr., Everett, WA 98204, (425) 513.0115, rockngem_mack@comcast.net

NORTHWEST ROCKHOUND RETREAT (Hancock): Lamar Tilgner (Chair), Mt. Hood Rock Club, 200 SE Olvera Ave., Gresham, OR 97080, (503) 666-2905, lstilgner1@verizon.net

PAST PRESIDENTS COUNCIL: Evelyn Cataldo, Lakeside Gem & Mineral Club, 99509 Brandon, Kennewick, WA 99338, (509) 628-0170, ecataldo@cbtubs.com

PUBLIC LANDS ADVISORY: Andy Johnson, Lakeside Gem & Mineral Club, P.O.Box 3251, Pasco, WA 99302, (509)546-1950, washatonian2@hotmail.com

SLIDE/ VIDEO LIBRARIAN: Tim and Sharon DeGrie, Lakeside Gem & Mineral Club, P.O. Box 458 Goldendale, WA 98620, 509-772-2533, cell 509-910-9228 ROCKNlibrary@yahoo.com

RESOLUTIONS: Fred Burton, Golden Spike Gem & Mineral Society, 90 Lakeview, Tootoe, UT 84074, (435)882-8614, fburton@trilobyte.net

SAFETY: Chuck Sonner, Southern WA. Mineralogical Society, 165 Tingle Rd., Winlock, WA. 98596, (360) 785-3909, chuckagate2@yahoo.com

SCHOLARSHIP: Rose Alene McArthur, Hells Canyon Gem Club, 14 Debertin Drive, Orofino, Idaho, 83544, (208) 476-3840, obmcarthur@cpintern.com

SHOW CHAIRPERSON 2012: Larry Hulstrom and Evelyn Cataldo, Lakeside Gem and Mineral Club, 5409 W. 26th, Kennewick, WA, 99338, (509) 783-6210,

SHOW COORDINATION: Pat Lambert, Lakeside Gem & Mineral Club, 26106 S. Oak, Kennewick, WA 99337, palambert@charter.net

STAMPS: Hermina Kolski, Club-at-Large, 208 Riverview 2 East, Great Falls, MT 59404-1534, (406)231-0620

SUPPLIES: Tim Hoff, Butte Mineral & Gem Club, 1016 Waukesha Ave, Butte, MT., 59701, (406) 491-3587, nwfm_timhoff@bresnan.net

WAYS & MEANS: Janice Van Cura, Willamette Agate & Mineral Society, Inc.3448 NW Covey Run, Corvallis, OR 97330 (541)753-2401, jvancura@peak.org

WEBMASTER: Bryan Schroeder, Lakeside Gem and Mineral Club, 153 Spring St., Richland, WA, 99352, (509)371-1572, bryant1939@gmail.com

NFMS WEB SITE: www.amfed.org/nfms

NFMS SPECIAL COMMITTEES

FIELD TRIP CHAIRMAN: Doug True, Billings Gem & Mineral Club, 2622 Broadwater, Billings, MT 59102, 406.670.0506, dtruefossils@yahoo.com

ROCKHOUND OF THE YEAR: Viola Jones, Skagit Rock & Gem Club, P. O. Box 2841, Mt. Vernon, WA. 98273, (360) 424-8340, rocks1x1vi.george@frontier.com

WEBSITE CONTEST: Cheri George

AFMS COMMITTEES (NFMS Representatives)

AFMS PRESIDENT-Lauren Williams, ENDOWMENT FUND- Edna Nelson, **EDITORS HALL OF FAME-Open, NEWSLETTER EDITOR-**Beth Heesacker, **NFMS CLUB BULLETIN AIDS-**Peggy Blickfeldt, **ROCKHOUND OF THE YEAR-**Viola Jones, **CONSERVATION & LEGISLATION-**Darlene Posthuma, **EDUCATION-ALL AMERICAN AWARD-** Jim & Libby Spencer, **INTERNATIONAL RELATIONS-**Bill and Janet Smith, **JUNIORS PROGRAM-Open, PROGRAM COMPETITION-Open, PUBLIC RELATIONS-OPEN, SAFETY-**Chuck Sonner, **SCHOLARSHIP FOUNDATION-**Dee Holland & Rose McArthur, **SUPPLIES AND PUBLICATIONS-**Tim Hoff, **JUDGE TRAINING COMMITTEE-**Dee Holland, **UNIFORM RULES-**Dee Holland (Director), **WAYS AND MEANS-**Glenn Lee (chair) & Janice Van Cura, **WEBSITE-**Bryan Schroeder.

THINGS YOU SHOULD KNOW

The **AMERICAN LANDS ACCESS ASSOCIATION (ALAA)** is a 501(c)(4) organization. Its purpose is to promote and ensure the right of amateur hobby fossil and mineral collecting, recreational prospecting and mining, and the use of public and private lands for educational and recreational purposes; and to carry the voice of all amateur collectors and hobbyists to our elected officials, government regulators and public lands managers. Your annual individual membership fee of \$25.00 helps support their activities. Club membership is \$50 per year. Send dues to: ALAA, Ruth Bailey, 2857 Addison Pl, Santa Clara, CA 95051-1705 For more information contact: Shirley Leeson, ALAA Vice President, P.O. Box 23, Tendoy, ID, 83468, shirleyleeson@cox.net or beauholland@centurytel.net

The **AFMS NEWSLETTER** is published monthly except Jan-Jul-Aug by the American Federation of Mineralogical Societies. Each NFMS member club should have three people (usually the Pres, Secretary, and Editor) receiving the AFMS Newsletter. If they are not, or if anyone else wants to subscribe (\$4.50 per year). Contact: AFMS Central Off., Steve Weinberger, P.O. Box 302, Glyndon, MD 21071-0302 cebar62@aim.com Make checks payable to "AFMS".

The **NORTHWEST NEWSLETTER** is the official publication of the Northwest Federation of Mineralogical Societies (NFMS) and is usually published ten (10) times per year. This publication is brought to you through your club membership in NFMS. The purpose of the Northwest Newsletter is to keep all NFMS members informed of activities and events pertaining to the business and services of the Federation. The Newsletter is printed and mailed to approximately 3500 homes in six states by Burley Reminder in Burley ID. For matters related to the Newsletter (i.e. content, advertising, etc) contact the **Newsletter**

Editor. For matters related to the Newsletter circulation (new members, address changes, etc.) contact **Circulation**.

SHOW COORDINATION. Your Federation provides a free service for NFMS members by listing your show in this Newsletter, on the NFMS website, two magazines ("Rocks and Minerals" and "Rock and Gem") and the on-line Calendar from "Lapidary Journal". Please provide the date and time for the show, the club name and show title (if applicable), the location of the show, and most important a contact person with address, e-mail address and/or phone (e-mail is preferred). Please send your show information four to six months in advance to the **Show Coordination** Chairperson. If you see an error once your show is listed, or if your show is not listed, contact the **Newsletter Editor**.

SAVE STAMPS PROGRAM. NFMS members are encouraged to use and save commemorative stamps. The money generated from the sale of these used (cancelled) stamps is then donated to Cancer Research. The collected stamps can be sent to the **Stamps Chairman**, brought to the NFMS Annual Show or given to your Federation Director in your club.

ATTENTION CLUB TREASURERS

Where to send your money

To NFMS Treasurer for:

1. Dues and supplies
2. Donations for the general fund
3. Donations to Junior Achievement
4. Advertisement in this Newsletter

Send to: Lyle Vogelpohl, see Treasurer this page.

To NFMS Endowment Fund Treasurer for:

1. Donations to Endowment Fund
2. Memorial contributions

Make check payable to NFMS Endowment Fund, send to Endowment Fund Treasurer.

To NFMS Scholarship Chairperson for:

1. Donations to AFMS Scholarship Fund
2. Memorial contributions to AFMS Scholarship

Make check payable to **AFMS Scholarship Fund**. Send to: Rose Alene Mc Arthur (see Scholarship this page).

To AFMS Endowment Fund for:

1. Donations to AFMS Endowment
2. Memorials

Send to: See AFMS Newsletter

To ALAA Treasurer for:

1. Memberships, new and renewals
2. Donations

Make check payable to ALAA
Send to Joyce Hanschu, ALAA Treasurer, 6607 Sturbridge Ln; Canton, MI 48187-2638

NFMS NEWSLETTER AND WEBSITE ADVERTISEMENT

Members, Non-members, clubs, etc. can advertise in the Northwest Newsletter. This service is provided to help defray the cost of printing and mailing the newsletter and is encouraged by the Federation. The only criteria for the ad is that it be hobby related (e.g. rocks, equipment, grit, shows, etc.).

Ads for the Northwest Newsletter are \$1.50 per square inch.

Example: 3" x 4" ad = 12 inches

12 inches x \$1.50 = \$18 per issue of the Newsletter
For an additional 50% of the cost of the Newsletter ad, you can have the same ad placed on the NFMS website for the same length of time. The Newsletter ad must be purchased to receive this additional advertisement.

Do not send ads on colored paper because the back-ground will look gray in the ad. The Editor will send a billing statement to the customer which will include instructions to make payment to the NFMS Treasurer. For more information or questions, call, e-mail or write the **Newsletter Editor**

To see this newsletter in living color and to see it by the first of the month go to
<http://www.amfed.org/nfms/newslet2.htm>
and click on the month you want to see.

COMMITTEE REPORTS



Kathy Moedl 1st Vice-President

Kathy Moedl
1st Vice-President

Some people start their new year January 1 and get going on new years resolutions. I, on the other had, feel like Rip van Winkle and am just now *waking* up to find 2012 well on its way. But now that I'm awake I'm getting excited for what the year brings and filling out my "To Do" list. I found an article written in the Rocky Mountain Federation newsletter and I liked it so much I am using part of it here.

What is on your "To Do" list for this year?

First of all I hope it is to do more with your hobby. My local club, the Idaho Falls Gem & Mineral Society, has a big list of field trips this year and I am hoping to go on all of them that I can. Even re-visiting old sites offers adventure. I didn't get as much lapidary (ok, none) done this winter as I had hoped, but I'm feeling the need to polish something so I will be getting out there soon.

The second thing I hope is on your list is to attend the annual NFMS Convention in Kennewick, Washington starting May 18. The Lakeside Gem Club puts on a very nice show by themselves and I'm excited to see what new things they bring hosting the NFMS show. There is a two-day seminar on petrified wood identification that promises to be very useful and interesting. Mark your calendars. There is no mid-year meeting in Kennewick in April. If you are a delegate please make sure you contact the Delegate Committee and get your Credentials signed.

The third thing on your list might be to help your local club with its program. Can you be an officer? How about volunteering to help with your annual Show? There are many way to help, from short-term tasks to being at the Show every day and working. But, whatever it is, DO SOMETHING with your club to make it really shine and attract new members. You will get as much out of your efforts as your club will get.

Happy Rockhounding in 2012
Kathy Moedl



Judges' Training Seminar

**REGISTRATION DEADLINE –
APRIL 16, 2012**

Now that the Holiday Season and Tucson Show is over, with the money you have left over, take advantage of this unique offer up close and personal.

Remember to fill out the Judges Training Application, see on line, amfed.org (or AFMS Nov, 2011, Vol. 65, #1) and send it in ASAP. **REGISTRATION DEADLINE, APRIL 16, 2012.** We need to know as early as possible how many people are coming to this important western event. You will need the 2012 AFMS Uniform Rules book -- download at amfed.org And we'll have the pleasure of Jay Bowman as the instructor extraordinaire.

Class begins on Thursday evening at the hotel (May 10th). Followed by instruction Friday, May 11 and Saturday, May 12, with judging at the show on Sunday May 13, in the morning, a short recap, and you are finished and good to go.

As you know, the earlier training classes were held in North Carolina in a beautiful resort-type retreat. This year the judges Training Course will be held at the Holiday Inn in Sparks, Nevada (1-775-358-6900 - hotel is offering \$75. including all taxes, per day for Queen or King rooms – mention AFMS Judges Training) a suburb of Reno. Reno Airport is convenient to fly in for those of you who are coming from the east.

The Reno Gem & Mineral Society has graciously offered their show and their exhibits as a training ground for this event Those of you in the Western States, especially California and the Northwest, take advantage while you can and attend. Next year the Judges Training event will be held elsewhere. Any questions, contact me at:

Dee Holland, Chair
AFMS Judges Training
beauholland@centurytel.net



From the Editor's Rockpile By Beth Heesacker

We are back from Italy and recuperating from the trip. I mentioned in the last newsletter that it had been 3 years since we had seen our grandchildren. I was wrong. It was 6 long years. Kids sure grow when you are not looking!!

We had a wonderful getting to know them better and also putting in some time rockhounding. The meeting with the mineralogist, Antonio Gamboni (on the right in the second picture), went very well. He has a wonderful collection of minerals from the island of Sardinia and we also got to see the mineralogy museum on the island of Caprera.

The whole family went rockhounding one day and I have a fine collection of different granites, marbles and other specimens. The best find was an area where there is amethyst. The whole hill is silica with pockets where the larger crystals grow. It was our grandchildren's first rockhounding field trip and even with the rain, they had a wonderful time



breaking rocks to see what was inside.

Our oldest grandson, 11 years, just happened to be studying the making of glass so the samples of the silica he had found and took to school were a big hit.

We missed the wind and rain storm over here in Oregon but we did get a bit of the Siberian Freeze that blew in with a passion in Europe.

If you ever thought that you had a hard time deciding which rocks to bring home from a field trip, you had it easy. Try whittling down your collection in order to make it within the baggage weight limits they have now days. Even with sorting 3 times we still had a hefty fee. Expensive field trip but I am sure it will be well worth it in the long run.



JUNIORS' PAGE



Focus on our Future, the Juniors! by Audrey Vogelpohl NFMS Juniors Chair

I am still in need of e-mails from the Junior Advisors in our NFMS Clubs. *Mini Miners Monthly* is sent out each month by publisher Diamond Dan, via e-mail, to each club's Junior Advisor, as well as each club's Editor and President. But we need your e-mails. The January edition concentrated on minerals ... there were more than enough ideas for a full year of programs. The NFMS purchased a 2 year subscription for each club, and although Diamond Dan publishes it for education of the juniors I personally find it beneficial for use in adult programs.

As our clubs are planning for their individual shows, and for the Lakeside/NFMS show in Kennewick in May, it is fun to see how the Junior members often outshine the adults in their displaying. In the AFMS Junior Badge Program there is a badge on Showmanship ... learning the rules of effective showmanship. Are you stumped on how to proceed?

The AFMS Program Badge book has detailed plans and resource information on how to go about sharing your enthusiasm in the displaying of one's own collection. The complete badge book is on-line at www.amfed.org, and the Showmanship Badge is #6. In my own club I have written guidelines for setting up a Junior Display, including guidelines that I hand out to my Juniors entitled "Rules for Junior Displaying", and a "Junior Display Application".

The guidelines are designed with display categories, age grouping, judging points and ribbons. Ribbons only are awarded (and every Junior displayer earns one) ... there will be no trophies awarded until the Junior participates in competition under the AFMS Uniform Rules at an NFMS Show. These guidelines and rules of participation are kept simple and aimed at the Junior level. They are not intended to distract or prohibit any Junior from entering formal NFMS and AFMS Show completion.

The judging guidelines are education centered so the Junior will have written feedback for points taken off ... fully explained so the Junior will have a primer to improve and work from. This is a good confidence builder to enter competition at the NFMS Shows. If you would like a copy of my own guidelines just e-mail me at nfmsjunior@comcast.net.

Mini Miners Monthly



Dear NFMS member Clubs and Societies,

At the NFMS Annual meeting, a vote was taken to purchase for every member Club and Society of the NFMS a 2-year subscription to the monthly publication, *Mini Miners Monthly*. "Mini Miners Monthly" is published by Darryl Powell through his publishing business, Diamond Dan Publications. Darryl is a life-long mineral collector, a graduate of The University Rochester (BS, Geological Sciences), and has been publishing coloring and activity books about minerals for 18 years.

There is no other publication like it for young mineral enthusiasts. Throughout the year you will receive interesting articles about minerals, crystals, and mineral collecting. "Mini Miners" will bring to you fun activities (like crossword puzzles, word searches, cut-and-fold crystal models, coloring pages) for fun learning. There will be crystal drawings to color, interviews with important mineral collectors of our day, and always suggestions on how to build and take care of a mineral collection.

What benefits will this bring to your club?

Mini Miners Monthly is a resource for your educational purposes. With this subscription, you receive permission to reproduce up to 6 pages per month in your monthly newsletter (attention bulletin editors: here's some quality, educational and fun material to help you in your newsletter publishing endeavors!), on your website and for use at meetings and shows. The purpose and goal of *Mini Miners Monthly* has always been to support the growth of children's programming in the AFMS clubs and societies. Since you are receiving this resource, *please make full use of it!* The NFMS is providing this for you to give you a tool for success in the development and growth of your Junior programs. (And trust us, adults like this material, too!)

What do I have to do?

We are in the process of compiling email addresses from the NFMS member clubs. *Mini Miners Monthly* will be emailed to your club each month as a PDF file. Darryl would like to email it to the following people in each club and society: the President, the Newsletter editor and the Juniors' Program leaders. Much of this information will be gleaned from the NFMS club and society profiles. However, if you are concerned that the right people receive this resource, please email Darryl Powell directly at diamonddan@rochester.rr.com with names and email addresses. If, at any time in the coming two years, you want or need to change or add recipients, please let Darryl know by email. It is our intention that each member club and society gets the fullest use it can out of this creative and helpful resource.

Thank you for your efforts in educating our communities, and especially our children, about the wonderful world of minerals and mineral collecting. It is our belief that providing this resource for you will ultimately benefit you, your club and your community.

Audrey Vogelpohl
NFMS Junior Program Chair

FOR TEACHERS OF ALL KINDS AND AGES



Ratchet UP Your Wrench By Bert Kae-Je'

Teacher, ratchet up your wrench and be as effective as you can!
Learning styles vary and maybe I'm also dyslexic,
How you teach me probably varies from the one seated next.
And if you don't know how it varies you too will be frustrated,
When at 70 I learn more slowly, or fumble with the resources.
Or become disinterested and don't come back.

We oft pay attention knowing children learn differently,
But what about adults who are so dissimilar,
Learning styles vary greatly, like grease and cheese,
What works well for one fails to assist another.

This past-a-year I've had at least five well-meaning Instructors.
All classes were diverse creative learning opportunities--
Lapidary-- cutting, slabing grinding, polishing,
Enamelling, Estate Jewelry, Diamond Grading and then,
Those *other courses I need* for Continuing Education,
Like courses in narcissism, nutrition, and psycho-pharmacology.

Now what I know is that there are many kinds of teachers,
In jewelry fabrication and lapidary classes we're oft a team,
Those who know often teach those who don't,
Informally passing information, learning from each other
Like Titano Indians of Costa Rico passing down the Story,

But what I also know is that the *teacher's responsibility*,
Remains to *seek* out the way the learner learns best.
How will this student best understand how to cut or polish stones?
Or best understand why it works better this way than that?
Teacher, ratchet up your wrench, motivate the student to excel.

Do I just *tell* her, do I just *show* him, do I *expect* he knows?
Or do I remember to ask what he or she knows already?
Do I remember that while a young adult may catch on quickly?
Older adults bring wisdom but gather new knowledge slowly,
Slower to learn but oft frustrated with a litany of directions.

Are they *visual*, do I show her or him via some media?
Are they *kinaesthetic*, yet I am afraid to let them try?
Do I let them try, try, until they are frustrated and give up?
Are they dyslexic and I *tell* them to *read* the directions?
Or add, divide and formulate when they panic with numbers?

Do they get it best, when they *hear, see, smell, touch, or try*?
Have you made it a goal to know **how your student learns**?
Are you aware of my own learning style and how it is unique to you?
Teacher, you know your stuff, but it must be passed to persons-a-new.
Ratchet up your wrench and for sure you will find more success.

Recently, in the little German village of Hettenrodt,
Quite near Idar Oberstein, where stone museums abound,
And Intergem--world Gem Show--occurs in October.
I spent 6 glorious days learning from Hans, Sir Hans,

Working with Hans, two heads taller than I,
He had giganuous, talented hands, and loved the opal,
Kindness of face and giving of himself, patient and caring,
Hans is a Jeweller, an Instructor, Lapidarist and Designer.

He's ingenious, capable and designs of museum quality!
Has students from France, Germany, Paris, and all around.
I had some difficulty communicating with Hans in words,
Sometimes my friend Heidi would translate or clarify,
Our languages were different -- English and German.

But in reflection, I know he was by far the One,
The best teacher for me, but what made it so?
He took the skills I already had and tweaked them,
He showed me a better way, he kindled my passion,
When I wanted to know how come..., he enlightened.
When I wanted to be left alone, he let me work!

He didn't tell me just do it this way or that and insist it so!
He showed me, stayed with me, showed me again, and trusted me,
Lessening frustration, affirming, he supported me to try once more.
Told me it would take a while, but I could do it!

On two different occasions this year, I knew I was unlikely to return.
I had come to learn but the well meaning teacher
Frustrated my bones, sinu, and disappointment set in,
Now, with Hans, I couldn't wait for the next day, week or when...

I hope to go again.....but it's a long way to Germany.
Thus, I'll be seeing **YOU, Teacher** with-in the Northwest!
So, ratchet up your wrench, listen and I will learn it best my way!

PS

I also know I need to respectfully tell you how I learn best.

By Bert Kae-Je', D. Min., Ph.D.

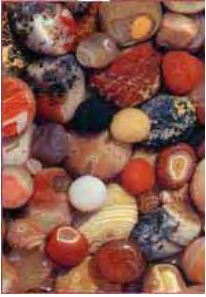
Learning is a life-long task for Bert. She has also been an
Instructor of many collegians and adults. She extends thanks to
the many volunteer and paid instructors who have taken time to
help her along the way especially in the arts.



Hans Gorner's Market

Photo by Dr. Bert Kae-Je'

COMMITTEE REPORTS



Beach Agate Alert !!!

What's not to love about these Oregon Beach Agates??? You could lose your right to collect them if the Oregon Park Department has their way. Right now they are working to close the beaches.... Contact your state legislators, the Chambers of Commerce along the coast and tell them they will lose revenue if rockhounds don't come. And tell the Park Department YOU want to know why they are imposing this. Rocks on the coast are a renewable resource...

With all that is going on in Washington State, now comes information on OREGON.... This is important and you must act immediately, contact your Oregon State Legislator regarding this with a copy to the Oregon Park and Rec, Ocean Shores.

Oregon Parks and Recreation Department
Ocean Shores/Scenic Waterways
725 Summer St NE, Suite C
Salem OR 97301

Shirley Leeson, ALAA VP
Rockhound Activist
shirleyleeson@cox.net



Clackamette Mineral and Gem Club 2011 Rockhound of the Year By Art Hess

The Clackamette Gem and Mineral Club Board of Directors have nominated **Jon and Sandy Metheany** as our club's rock hound of the year for their outstanding examples of club participation. We also admire their examples of a full and happy life in the face of tremendous personal challenges.

Sandy was the fifth child of 10. She had polio at the age of two, two broken arms at eight, and diagnosed with Cystic Fibrosis at the age of nine. She assumed she would not find someone to love her with all of her problems, which included a pronounced limp. But she and Jon met the day he came home from the service and they were married seven months later. They have been married 38 years. They have one daughter Jodi, a son in law Kevin, and three grandchildren, Braeden, eight years old, Serena, seven years old, Anika two years old. Their grandchildren are a great joy to them and budding rock hounds. Braeden loves obsidian. He and his sister Serena stood at a recent club meeting and showed their favorite rocks, collected last summer, with grandma and grandpa.

In 2003, Sandy had a double lung transplant; her health had deteriorated to the point that she was unable to walk across a room, even with oxygen. She recently became diabetic and had a gallbladder operation.

Jon has recently gone through throat cancer surgery and treatment. They have kept up their club duties and maintained their good cheer in spite of it all.

For many years they have been very active members of St. James Catholic Church in Molalla, Oregon. Their love of God and their reliance on him has been an inspiration to many.

Jon and Sandy are a great asset to our club on meeting nights. They come early and help set up. Sandy makes the punch and coffee and oversees the clean up afterwards. Jon is now the field trip chairman; one of the hardest jobs in the club. He does a great job at making everyone feel welcome. He spends a lot of time and gas scouting locations and guiding the club to the most productive locations.

Our Clackamette Mineral and Gem Club Show, held every October, benefited from Jon and Sandy's hard work. Jon stored and hauled slabs and rock, helped set up, sold slabs during the show, and tore down afterwards. Sandy started working on the k Kid's Komer long before the show with a team who made "critters" (rock and shell people and animals), and bags of tumbled rock for the kids.

Of all the rock clubs in our area, we are fortunate that they chose to be part of ours. If you see their booth, F.R.O.G. Creations, at any of our local rock shows, stop by and get acquainted. These folks are truly worth knowing.



2011 Rockhound of the Year Mt Hood Rock Club Gresham, Oregon

Mt. Hood Rock Club honors **Stephen Petkovsek** as their 2011 Rockhound of the Year. Stephen joined in 2000 and

has served as Vice President and President. He has been in charge of the club's competitive society case and the lapidary shop and works at the club and Portland Regional shows, often as chairman of the silent auction. For several years he has assembled a case of rock related items to be used at the club show as a raffle item. His interests are making cabs and spheres, polishing flats, silversmithing and knapping. Many of his projects are donated to the club, Portland Regional and to the Children's Hospital in Portland. He enjoys rock collecting in central Oregon and comes back with many unusual specimens. Each year he volunteers a week of his time to teach silversmithing at the Federation's Rockhound Retreat. He attended and passed the judging class at the Retreat and has assisted as a judge at several shows.



First Day of Spring

March 20, 2012

NFMS SHOW AND MEETING



**We May Be A Little Bit Country,
But We Will Show You
A Rock'n Good Time!**

**The NFMS Annual Meeting will be May 18th at 4 pm
Fairgrounds in Kennewick, Washington**

*2012 NFMS
Gem & Mineral Show
And Convention*



Special Exhibits
Ice Age Floods
Coyote Canyon Mammoth Site
And More Coming

Fantastic Fluorescent Exhibit
27 Top Vendors

"Rock'n The Country"
In
Kennewick, Washington
May 18, 19 & 20
Benton County Fairgrounds

Guest Lectures
Walt Wright - Petrified Wood Expert
Bob Jackson - Geologist
Jack Powell - WA State Geologist

Outstanding Collector Displays
Sunday Morning Tailgating

Kids Activities Extraordinaire

Come Join The Fun!
www.lakesidegemandmineralclub.com
dac@bioguardtech.com






Daylight Savings Time

*Spring Forward
March 11, 2012*

NFMS SHOW AND MEETING

A REMINDER AND REQUEST FROM THE CREDENTIALS COMMITTEE



The NFMS Credentials Committee Chairpersons, Clara & Del Walker, must receive the NAMES (only) of Club Directors and Delegates as soon as possible (ASAP) for planning purposes of the meeting. The annual meeting will be held at 4:00 p.m. on May 18, 2012. Registration is open one hour prior to the meeting at the Benton County Fairgrounds, Kennewick, WA. The Credential forms below must be completed by the designated director/delegate, signed by the Club President and Secretary, and **BROUGHT BY THE DIRECTOR AND DELEGATE** to the annual meeting. Or, this should be done by the alternate delegate(s), if necessary. Send the name(s) (not the credentials forms) at least two days prior to the meeting to:

Clara & Del Walker
12377 SE Davis Loop, Prineville, OR 97754
Phone: 541-447-7826 (cell: 503-812-6540) or email to dcwalker@embarqmail.com

NFMS DIRECTOR'S CREDENTIALS

Name of Director _____
Name of Club _____
City, State _____
Club President Signature _____
Club Secretary Signature _____
Date _____

Must be **completed** and **signed** to be seated with voting rights at the Northwest Federation of Mineralogical Societies Annual Meeting

NFMS DELEGATE'S CREDENTIALS

Name of Delegate _____
Name of Club _____
City, State _____
Club President Signature _____
Club Secretary Signature _____
Date _____

Must be **completed** and **signed** to be seated with voting rights at the Northwest Federation of Mineralogical Societies Annual Meeting

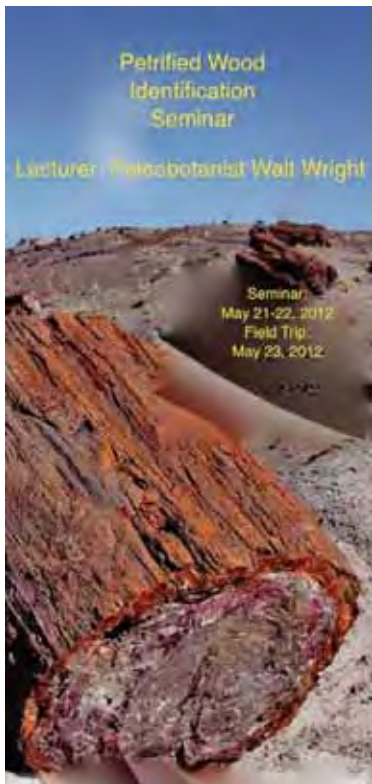
LEARN TO IDENTIFY YOUR PETRIFIED WOOD SPECIMENS

Walt Wright is a renowned paleobotanist who has traveled the world in search of new and rare plant species in the geological record. He is well known among petrified plant collectors as the "expert".

Walt will be offering a two day seminar on May 21-22, 2012 in Kennewick, Washington. Walt is planning a one day field trip following the seminar to a local wood location for an explanation of the geology and paleobotany of the area (pending site approval).

Cost of the seminar is \$80 per person. The fee includes a printed manual. Bring up to three pieces of wood to have Walt identify. You should also bring along a 10X or 20X loupe.

Please pre-register, if possible. The class will be held at the Show location (Benton County Fairgrounds). Camping is available at \$15 per night. There are several motels within about 15 minutes from the site.



Pre-Registration Form

Name: _____
Address: _____
Phone: _____ Email: _____

Mail registration form and \$80 check payable to Lakeside Gem & Mineral Club to Jerry Sorensen, PO BOX 1159 Richland WA 99352.

Email: JerryBS@frii.com Cell: 509-392-1363

Please use separate form for each person attending the seminar.

NFMS SHOW AND MEETING



Northwest Federation of Mineralogical Societies
 Annual Show: Hosted by: Lakeside Gem and Mineral Club
"Rock 'N the Country"
 May 18 - 20, 2012
 Benton County Fairgrounds, Kennewick, WA
 ADVANCE REGISTRATION
 Deadline: April 15, 2012



(Please Print) One form per person. OK to combine payment per family. Form may be duplicated.

Name: _____ (Last, First, Middle Initial)
 Address: _____ (Street) _____ (City) _____ (State) _____ (Zip) _____
 E-mail: _____ Phone: _____

Federation & Local Club Affiliation:

Please check all that apply:
 NFMS Officer: _____ Delegate: _____ Alt. Delegate: _____
 Editor: _____ Judge: _____ Demonstrator: _____ Other: _____
 Competitive Exhibitor: _____ Noncompetitive Exhibitor: _____

SHOW ADMISSION (Please check) DAILY RATE DAYS 3 DAY PASS TOTAL COST
 Adult \$ 5.00 _____ \$12.00 \$ _____
 Children under 14 free, with paid adult _____ \$ _____

CAMPING ON SITE at Benton County Fairgrounds

Hookup (electric and water only) \$ 15.00/day (about 115 sites available) _____ days \$ _____
 No-Hookup (dry camp) \$ 10.00/day _____ days \$ _____

Notes: All food events require reservations (All food events at Fairgrounds unless otherwise noted.)

FRIDAY May 18, 2012 If you plan to attend no cost events please CHECK LINE
 NFMS Annual Meeting 4:00PM no cost _____
 SATURDAY May 19, 2012
 All Editors Breakfast 8:00AM - 10:00AM \$10.50 \$ _____
 Editor's Symposium following (about) no cost _____
 Social Hour (at Country Gentleman) 6:00PM - 7:00PM cash bar _____
 Awards Banquet (at Country Gentleman) 7:00PM - 9:30PM \$20.00 \$ _____
 SUNDAY May 20, 2012
 Tailgating 7:00AM - 10:00AM (NFMS and Lakeside Members only) Pre-registration required _____
 Officers/Committee Chairman, Judges and Clerks, and _____
 Past Presidents Lunch 12 Noon - 1:00PM \$12.00 \$ _____

Make check payable to: Lakeside Gem and Mineral Club. TOTAL AMOUNT DUE: \$ _____

Mail application and remittance before April 15, 2012 to:
 Patricia Richardson
 2817 W. 18th Ave. #46
 Kennewick, WA 98337

Show Co-Chairman: Evelyn Cataldo, 509-628-0770 email: cataldoevelyn@yahoo.com
 Show Co-Chairman: Larry Hulstrom, 509-783-6210 email: larryhulstrom@live.com



Northwest Federation of Mineralogical Societies
 Annual Show: Hosted by: Lakeside Gem and Mineral Club
"Rock 'N the Country"
 May 18 - 20, 2012
 Benton County Fairgrounds, Kennewick, WA
 COMPETITIVE DISPLAY APPLICATION
 Deadline: April 15, 2012



Name: _____ Phone: _____
 Name of Spouse: _____ Free show admission to exhibitor & spouse

Address: _____
 City: _____ State: _____ Zip: _____
 Member of Club/Society: _____ City/State: _____

Competing in: Division: _____ Class: _____ Junior Exhibitor: Yes No

Junior Only: Date & year of Birth: _____
 Cases will be judged according to the current edition of AFMS Uniform Rules, the latest "Gem List", the latest Mineral Classification List, and the latest AFMS Fossil List.
 Exhibitor Group - Master Advanced Novice Junior Society Jr. Society
 (Consult AFMS Uniform Rules, 8th Ed. With updates at www.AMFED.org)

Type of material and/or type of exhibit (including Black Light exhibits): _____

Your case dimensions: _____ width _____ height _____ depth
 Do you need to borrow a case? Yes No
 Please note: loaner cases (4' x 2' x 2') do not have risers; you will need to bring your own. Liners will be provided, if needed.
 Please make your reservations as soon as possible if you wish to borrow a case.

You may set up your case(s) between 3 PM and 8 PM, Thursday May 17, 2012, or between 8:00 AM & 9:30 AM Friday May 18, 2012. Your exhibit may not be removed before 4:00 PM Sunday May 20, 2012. Security will be provided during setup and tear down and during the three days of the show. Should exhibitors for any reason need to open their cases between 10:00 AM Friday, May 18, 2012 and 4:00 PM Sunday, May 20, 2012 they are required to have a member of the show committee or uniformed security present.

LIABILITY: It is mutually agreed that the Lakeside Gem and Mineral Club and/or the Northwest Federation of Mineralogical Societies shall not be liable to any Exhibitor in whole or in part. This includes the property of Exhibitor or injury to that person resulting from any cause. Submitting this signed application for entry constitutes acceptance of their rules and regulations.

I certify that all materials exhibited in competition are my personal property, and that all workmanship exhibited in competition was done by me as required by the rules. I have read the current rules and agree to abide by them.

SIGNATURE OF EXHIBITOR: _____ Date of form: _____
 OFFICER CERTIFICATION: I am an officer of _____ and I certify this exhibitor is a member in good standing of said society and AFMS.

OFFICER SIGNATURE: _____ Title: _____ City: _____

Mail applications to: Dee Holland, P.O. Box 23, Tandy, ID 83468
 Competitive Exhibit Applications must be postmarked by April 15, 2012. One form per exhibit. Forms may be duplicated.

NFMS SHOW AND MEETING



Northwest Federation of Mineralogical Societies
 Annual Show: Hosted by: Lakeside Gem and Mineral Club
"Rock 'N the Country"
 May 18 - 20, 2012
 Benton County Fairgrounds, Kennewick, WA

NONCOMPETITIVE DISPLAY APPLICATION
 Deadline: April 15, 2012



Name: _____ Phone: _____
 Name of Spouse: _____ Free show admission to exhibitor & spouse
 Address: _____
 City: _____ State: _____ Zip: _____
 Member of Club/Society: _____ City/State: _____
 Type of material and/or type of exhibit (including Black Light exhibits): _____
 Your case dimensions: _____ width _____ height _____ depth
 Do you need to borrow a case? Yes No
 Please note: loaner cases (4' x 2' x 2') do not always have risers, you will need to bring your own. Liners will be provided, if needed. Please make your reservations as soon as possible if you wish to borrow a case.
 You may set up your case(s) between 3 PM and 8 PM, Thursday May 17, 2012, or between 8:00 AM & 9:30 AM Friday May 18, 2012. Your exhibit may not be removed before 4:00 PM Sunday May 20, 2012. Security will be provided during setup and tear down and during the three days of the show. Should exhibitors for any reason need to open their cases between 10:00 AM Friday May 18, 2012 and 4:00 PM Sunday, May 20, 2012 they are required to have a member of the show committee or uniformed security present.

LIABILITY: It is mutually agreed that the Lakeside Gem and Mineral Club and/or the Northwest Federation of Mineralogical Societies shall not be liable to any Exhibitor in whole or in part. This includes the property of Exhibitor or injury to their person resulting from any cause. Submitting this signed application for entry constitutes acceptance of their rules and regulations.

SIGNATURE OF EXHIBITOR: _____
 Mail applications to: **RON NORTHEY**
 1506 S. Olson
 Kennewick, WA 99338
 (Tel. 509-783-2655)
 (E-mail: nvandron@charter.net)

Mail this form for **NONCOMPETITIVE EXHIBIT APPLICATION** before April 15, 2012
 Please submit one form per exhibit. Form may be duplicated as needed.



NFMS SHOW AND MEETING

NEWSFLASH

Kennewick, Tri-Cities, WA

PERSONAL INVITATION

CHECK IN AND CHECK OUT

By Andy Johnson

The 2012 NFMS Show and Exhibition is being held in Kennewick, WA this coming May 18 through May 20, 2012 at the Benton-Franklin Fairgrounds.

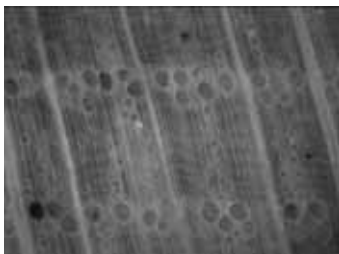
The three cities of Pasco, Kennewick and Richland are affectionately referred to as the Tri-Cities and are nestled along the banks of the Columbia River situated in the desert basin of Southeast Washington. Although known for its fine wineries and dining options and abundant river recreation, much more exists to do and see within a 50 mile radius of the showgrounds.

A Ticket 2 Adventure featuring 10 must-see/do activities while in the Tri-Cities has been provided for your entertainment and enjoyment.

For the more adventuresome travel 90 minutes north and visit the Saddle Mountains to collect petrified wood or drive a bit further north to collect common opal and agate at the Diadomite open pit mine junction near George, Washington.

While in the vicinity do not overlook viewing the life size wild horses sculpture outside Vantage, WA while on your way to the renowned Ginko Petrified Forest museum.

The Lakeside Gem and Mineral Club is proud to host and sponsor this year's Federation Show and cordially invite one and all to attend. Take advantage of this "Oasis in the Desert" by claiming your **Ticket 2 Adventure**. Come join us for a memorable experience and have fun in the sun.



LEARN PETRIFIED WOOD IDENTIFICATION

The photo is a transverse section of petrified wood from Stinking Water, Oregon. Some of the characteristics easily seen in the photo are the bold medullary rays and ring porous vessels. Is the wood Beech or Oak? Attend the seminar and learn the techniques to identify wood found in the northwest.

Walt Wright is a renowned paleobotanist who will be offering a two day seminar on May 21-22, 2012 in Kennewick, Washington following the Northwest Federation show.

Cost of the seminar is \$80 per person. The fee includes a printed manual. Bring up to three pieces of wood to have Walt identify. Please pre-register, if possible. You should also bring a 10X or 20X loupe.

Recommended reading includes the following books: William D Tidwell: **Common Plants of the North America** 2nd edition and Bruce Hoadley: **Identifying Wood: Accurate Results with Simple Tools**. Walt will bring a selection of books on petrified wood as well as 20X lenses for purchase at the seminar.



Scribe News

By Cheri George, SCRIBE Member

Do you have trouble filling the last page of your newsletter with an interesting article?

Do you think you might like to change the format of your newsletter – from typing across the page to typing in 2 or 3 columns

but you don't know what it would look like?

Are you having problems with pictures or converting your newsletter to PDF so you can send it by e-mail to your members and save some money on postage and printing?

Do you feel you are paddling up stream, against the current, and nobody in your club really or truly understands what it takes to put the newsletter together each month?

If you answered YES to any of the above questions – then I have a deal for YOU !

Join your fellow editors by becoming a member of SCRIBE – Special Congress Representing Involved Bulletin Editors. There are presently approximately 160 members, but we're always looking to enlarge the group to include YOU. Dues for the year are only \$6.00 (US Funds). For this modest fee you receive four electronic newsletters per year plus a DVD that's chock full of newsletters, articles of interest, clip art and everything an editor needs to know! Everything on the DVD can be copied and used in your own club bulletin!

The old saying "miserly loves company" certainly can apply to bulletin editors as we've all "been there - done that." Only another editor understands the frustration of having to wait for the president, secretary, committee chairmen, etc. to send in reports so you can type pages. There is no better reward, after mailing your newsletter, than to receive a pat on the back from another editor for a well written article, the new approach you tried in the format or your success with pictures. Editors understand – most club members don't. If you want more information about SCRIBE check out the Scribe Web Site <scribe.rbnet.net>.

I look forward to seeing your name among the list of members in SCRIBE.

AFMS Endowment Fund Update

By Pam Hecht, AFMS Endowment Fund Chair

Here are a few more generous donations made to the AFMS Endowment Fund drawing. I hope they entice you enough to order your tickets! All proceeds from the drawing are invested and the interest from these investments is used to fund various AFMS programs including the badges for that most important Juniors program!

Fossil Sharks Tooth Collection
Sterling Silver Pin.

Three Calcite specimens from the Juanita Mine in Socorro Co. NM.
Three and one-fourth pound piece of natural float copper from the Keweenaw Peninsula of Michigan and a stock certificate from the Calumet & Hecla Consolidated Copper Company from 1949.

BUT we are still way short of items for the drawing. So.....it's time to clean out those boxes, pails and display cases of specimens to find an item that you can donate for our drawing.....please please - pretty please!!!! Mail them me at 25393 Oak St; Calumet, MI 49913.

NFMS MEMBER CLUBS'SHOW SCHEDULE

March 3 - 4 Sat 9 - 6, Sun 9 - 5	Owyhee Gem & Mineral Society	O'Conner Field House 2200 Blaine, Caldwell, ID	Carolyn Roberts 208 466 6191 ncrobertsrp@msn.com, www.owyheerocks.com
March 10 - 11 Sat 9 - 6, Sun 10 - 5	Magic Valley Gem Club	Twin Falls Co. Fairgrounds 215 Fair Avenue, Filer, ID	Shirley Metts 208 423 4827 rnsmetts@centurylink.net or Jon Cromer 208 293 5846, rokcutter@hotmail.com
March 10 - 11 Sat 9 - 5, Sun 10 - 4	Rock and Arrowhead Club	Klamath Co. Fairgrounds 3531 South 6 th Street, Klamath Falls OR	Linda Watson/Robert Gresham 541 281 9295 watsongresham@charter.net
March 16-18 Fri 10 - 7, Sat 10 - 7 Sun 10 - 5	Timpanogos Gem & Mineral Society with a Junior Club	Spanish Fork Fairgrounds 475 South Main Street, Spanish Fork, UT	Keith Fackrell PO Box 65 Provo, UT 84601 801 592 0410 timprocks@gmail.com , timprocks.weebly.com
March 30 - 31 Fri 8:30 - 6, Sat 9 - 5	The Panorama Gem & Mineral Club	Fort Colville Grange Hall, 1 mi. East of jct. of US 395 & Hwy 20, Colville WA	Bill Allen 509 935 8779 sago@theofficenet.com
March 31 - April 1 Sat 10 - 6, Sun 10 - 5	Sweet Home Rock & Mineral Society	Sweet Home High School Activity Gym 1641 Long Street, Sweet Home OR	Joe Cota 541 451 2740 PO Box 2279 Lebanon, OR 97355
March 31 - April 1 Sat 10 - 6, Sun 10 - 5	Mt. Baker Rock & Gem Club	Bloedel-Donovan Park 2214 Electric Ave. Bellingham, WA	Daniel Hayes, 360 312-8380, hayes0406@gmail.com, www.mtbakerrockclub.org
March 31 - April 1 Sat 10 - 6, Sun 10 - 5	Southeast Idaho Gem & Mineral Society	Bannock County Fair Grounds 10588 Ifft Road, Pocatello ID	Kevin Taylor 208 232 4269 PO Box 3089 West Neeley Loop American Falls, ID 83211
April 13 - 15 Fri 9 - 6, Sat 10 - 6 Sun 10 - 4	Golden Spike Gem & Mineral Society	Golden Spike Event Center, Weber County Fairgrounds, 1000 North 1200 West, Ogden UT	Cindy Aeschlimann 801 648 5060 POB 12835 Ogden UT 84412-2835 www.goldenspikegem.org
April 14 - 15 Sat 10 - 6, Sun 10 - 5	Idaho Falls Gem & Mineral Club	Idaho Falls Recreation Center B Street, Idaho Falls, ID	Jim Bosley 208 520 1819 jbosley@cableone.net
April 20 - 22 Fri 9 - 6, Sat 10 - 6 Sun 10 - 4:30	Willamette Agate & Mineral Society (WAMS)	Polk County Fairgrounds 520 South Pacific Hwy West Rickreall, OR	Etheleen Flippo 503 623 4247 reflipoo@hotmail.com
April 21 - 22 Sat 10 - 5, Sun 10 - 5	West Seattle Rock Club	Alki Masonic Temple 4736 40 th Avenue SW, Seattle WA	Audrey Vogelpohl 206 932 3292 , avogelpohl@comcast.net , www.westseattlerockclub.org
April 21 - 22 Sat 10 - 6, Sun 10 - 4	Yakima Rock & Mineral Club	Washington National Guard Amory 2501 Airport Lane, Yakima WA	Marti Sondgeroth 509 248 6401 evenings cell 509 910 3484, Marthms@q.com
April 28 - 29 Sat 10 - 6, Sun 10 - 4	Hatrockhounds Gem and Mineral Society	Hermiston Conference Center 415 South Highway 395, Hermiston, OR 97838	Mike Filarski 541 922 5091 stonemorlin1@netscape.net , www.hatrockhounds.org
April 28 - 29 Sat 10 - 5, Sun 10 - 5	Gray's Harbor Rock & Gem Club	Gray's Harbor County Fairgrounds 43 Elma - McCleary Road, Elma, WA	Gary Emberley 360 533 6196 melissa624@hotmail.com
May 4 - 6 Fri 10 - 6, Sat 10 - 6 Sun 10 - 4	Spokane Rock Rollers Club	Spokane County Fair & Expo Center North 604 Havana (at Broadway) Spokane WA	Mike Shaw 509 244 8542 mikesawmoose@yahoo.com www.rockrollers.org
May 12 - 13 Sat - 10 - 6, Sun - 10 - 4	Bozeman Gem & Mineral Club	Gallatin County Fairgrounds 901 North Black, Bozeman MT	Sally Griffin 406 451 4362 griffin830@yahoo.com or Dan Carter 406 586 4552
May 18 - 20, 2012 Fri 10 - 5, Sat 10 - 5 Sun 10 - 4	2012 NFMS Annual Gem Show, Lakeside Gem & Mineral Club	Benton County Fairgrounds 1500 South Oak, Kennewick WA	Dom Cataldo dac@bioguardtech.com PO Box 6652, Kennewick, WA 99336 www.lakesidegemandmineralclub.com
May 19 - 20 Sat 8 - 5, Sun 8 - 4	Bitterroot Gem and Mineral Society	Ravalli County Fairgrounds First Interstate Center, 100 Old Corvallis Road, Hamilton MT	Mike McConnell 406 777 0536 micker1949@yahoo.com
June 1 - 3 Fri 12 - 5, Sat 10 - 5 Sun 11 - 4	Puyallup Valley Club	Swiss Park, 9205 198 th Avenue East Bonney Lake, WA 98391	Contact - Inga Holmquist 253 312 5314 PO Box 134 Puyallup WA 98371
June 2 - 3 Sat 10 - 6, Sun 10 - 5	Everett Rock & Gem Club	Everett Soccer Arena, 2201 California St. Everett, WA (new location)	Fritz Mack 425 232 0809 PO Box 1615 Everett WA 98206
June 2 - 3 Sat 9 - 5, Sun 10 - 4	North Idaho Mineral Club	Kootenai County Fairgrounds and Event Center, Coeur d' Alene ID (2 blocks East of Hwy 95)	Bill Johnson 205 765 2900 info-bockbb@aol.com
June 9 - 10 Sat 10 - 5, Sun 10 - 5	Butte Mineral & Gem Club	Butte Civic Center Annex 1340 Harrison Avenue (exit 127 North), Butte, MT	Peter Knudsen PO Box 4492 Butte MT 59702 406 496 4395
June 16 - 17 Sat 10 - 6, Sun 10 - 4:30	Oregon Coast Agate Club	Yaquina View Elementary School Multipurpose Room, 351 SE Harney Street (just off Hwy 20, turn south at the light), Newport OR	K. Myers 541 265 2514 PO Box 293 Newport OR 97365