



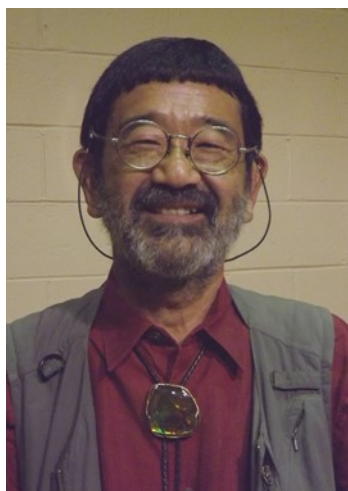
NORTHWEST NEWSLETTER



TIME SENSITIVE MATERIAL

Northwest Federation of Mineralogical Societies
Tom Burchard, Circulation
875 E 4500 S
S Ogden, UT 84403-2913

VOLUME 56, NO. 2 Northwest Federation of Mineralogical Societies FEBRUARY 2016



Hidemi Kira President

Hello to All,

I made it to Quartzsite again this year with my wife Tomoko and would like to write a little report in this issue.

We often stay in Barstow, CA on the way and stop by at Diamond Pacific (manufacturer of the cab making machine “Genie”) where they have a rock shop. When we visit, we try to see the president, Bill Depue and ask for locations for rockhounding in the area. There was couple asking Bill for directions to a rockhounding site, so he seems to be very helpful to many people. This time we received some information of the Lavic Lake area near Ludlow. He drew us a map and also gave us printed material about the site. The site is about 50 miles east of Barstow and we had to go on a sandy road. This whole area is a little tricky and your vehicle will sink in the sand if you are not careful. We were almost in trouble few years ago near this site and 4WD is a must in the area. The sand looked pretty bad, so we decided to park before the final point and walked over to the site. There were many colorful jaspers and some were brecciated. We spent few hours and then headed to Blythe.

Last year, I wrote about a road closure in the Ludlow area, but we found every place was open this year, so last year must have been a temporary situation. After arriving at Blythe, CA, we started on the first day (Jan. 20) of the QIA (Quartzsite Improvement Association) Show. It happened to be the 50th Annual Show and there were 259 dealers on the list we got at the show. The majority of the dealers are outside, but there is a building which has many display cases set up together with the inside dealers. They always have a case of the material from the site of their daily field trips and have cases with material from the nearby sites in Arizona. You may want to check out their website www.qiaarizona.org for planning to go next year.

The QIA Show is a 5 day show, but it is difficult to see all the dealers. Another major show is the Desert Garden, which starts from January 1st and ends February 28th. There are hundreds of dealers, but some of the dealers leave early to set up at the Tucson Show, so we had to check some of them out during the QIA Show. And there are the Panorama Prospectors, Tyson Wells, Main Event and other shows that are going on at the same time and it is almost impossible to see the whole thing in a week or so, but it is very exciting and fun! We always find some very good material that we don't see in our neighborhood and for reasonable prices. As I wrote in the past, this is a place where the rockhound must visit at least once in their lifetime. If you have an extra fat wallet, you may want to visit the Tucson Show which follows the QIA. Unfortunately my wallet is not fat enough to go to Tucson yet, but I heard they have great shows.

While we were in Quartzsite, we attended the ALAA's Board Meeting, their Public Meeting and the 4th Annual Clean-Up. There should be some reports on the ALAA in this issue, but want to note that at the Public Meeting, we had Mike Hunerlach, recently retired US Forest Service Head Geologist (belongs to Roseville Club in California) speak to us on Rockhounding on Public Lands managed by the Forest Service and he also gave us some insight into the laws, rules and regulations that affect collecting rocks and other items. He will be a huge help for the rockhounding world.

The 4th BLM Annual Clean-Up was at a new location at the Dome Rock Exit on I-10 and we picked up lots of garbage. The Clean-Up is a very important activity which can create a great relationship with the BLM and I strongly encourage your club to clean up an area while on your field trips especially if you are planning to collect on the BLM land.



January 24, 2016

It will depend on how you want to do it, but it should take only about 2 hours and that 2 hours will make a big difference. You will need to contact the BLM in the planned area and make the arrangements. And make sure you have the ALAA bags to put in the garbage and take pictures with them. For details, please visit ALAA's website www.amlands.org and click on “ARE YOU WILLING TO DO A BLM/FORESTRY (President's Report continued on page 3)



Doug True, new ALAA President
With Mike Hunerlach

What's Inside:

President's Report	1
1 st VP's Report	3
2 nd VP's Report	4
Editor's Rockpile	4
Mid Year Meeting Update	4
2016 Show Update	4
AFMS and NFMS Shows and Meetings	5
Juniors' Report	5
Junior Achievement Deadline	5
Club Growth	6
Important Deadlines	6
Club Growth, Another Perspective ..	7
AFMS Endowment Fund	7
Land Use Matters	8
Camp Hancock Poem	9
Ads From Our Members	10
Rockhounds of the Year	11
All American Club Report	11
NFMS Clubs' Shows	11-12

NEWSLETTER DEADLINE:

March deadline– March 15th

For deadlines and to submit articles contact

Beth Heesacker

Email: nfmseditor@coho.net

NFMS Website:

www.amfed.org/nfms

To see this newsletter in living color and to see it usually by the first of the month

go to

<http://www.amfed.org/nfms/newsletters.asp> and click on the month you want to see.

Non-Profit Org.
U.S. Postage PAID
McMinnville, OR
Permit #7

NFMS EXECUTIVE OFFICERS 2015-16

PRESIDENT: **Hidemi Kira**, Clackamette Mineral and Gem Club, 15455 S. Highland Rd., Oregon City, OR 97045, htkira@spiritone.com

1ST VICE PRESIDENT: **Jim Bosley**, Idaho Falls Gem and Mineral, 634 Tyson Ave., Idaho Falls, Idaho, 83401, (208)520-1819, jbosley@cableone.net

2ND VICE PRESIDENT: **Keith Fackrell**, Timpanogos Gem & Mineral Society, 2295 E. 700 S. Springville, Utah 84663, krfackrell@gmail.com

EXECUTIVE SECRETARY: **Judi Allison**, Hatrock-hounds Gem and Mineral Society, 1701 NW 11th. St., Hermiston, OR, 97882, 541-720-4950, jall@eotmet.net

TREASURER: **Lyle Vogelpohl**, West Seattle Rock Club, 8810 37th Ave. SW, Seattle, WA 98126-3617, (206) 932-3292, nfmstreasurer@comcast.net

NFMS STANDING COMMITTEES

BUDGET: **Jim Bosley**, 1st Vice President (see above)

BULLETIN AIDS: **Ronna Watkins**, Yakima Rock and Mineral Club, POB 635, Tieton, WA 98947, (509) 673-0085, 4ronna@gmail.com

CIRCULATION: **Tom Burchard**, Golden Spike Gem & Mineral Society, 875 E 4500 S, S. Ogden, UT 84403, (801) 479-4286, Roxhund@aol.com

COMPETITIVE EXHIBITS:
RULES AND AWARDS CHAIR: **Lauren Williams**, 957 E Elva Ave, Idaho Falls, ID 83401 (208) 529-6978
JUDGING DIRECTOR: **: Evan Day**, 509 Highland Blvd, Brigham City, UT, 84302, 801-391-2912, eday@sisna.com
REGISTRAR: **Dee Holland**, PO Box 23, Tendoy, Idaho, 83468, 208-756-2394, beauholland@centrytel.net

CREDENTIALS: **Del & Clara Walker**, Central Oregon Rock Collectors, 12377 SE Davis Loop, Prineville, OR 97754, 503-812-6540 , cdwalker@q.com

CUSTODIAN: **Keith Fackrell**, 2ND Vice President: (see above)

DIRECTORY: **Carol Willey**, Oregon Coast Agate,

ENDOWMENT FUND:
CHAIRMAN: **Edna Nelson**, Mt Hood Rock Club, #14025, PO Box 190, Jefferson, OR 97352- 0190 (a mail forwarding address), (503) 397- 5284, rockhoundstool1966@yahoo.com **TREASURER:** **NFMS Treasurer** (see above)

FINANCIAL ADVISOR: **Jon Spunaugle**, PO Box 872615, Vancouver, WA 98687-2615, (360) 624.7604, jon-spe@comcast.net

HISTORIAN: **OPEN**

JUNIORS CHAIR: **Audrey Vogelpohl**, West Seattle

NEWSLETTER EDITOR: **Beth Heesacker**, Clackamette Mineral and Gem Corp., 4145 NW Heesacker Rd., Forest Grove OR, 97116, (503) 357-8804, nfmseditor@coho.net

NFMS Club-at-Large: **1st Vice President** (see above)

NOMINATING CHAIRMAN: **Warren Rood**, Marcus Whitman Gem and Mineral, 243 E. Birch, Walla Walla, WA 99362, warrenrood@yahoo.com

NORTHWEST ROCKHOUND RETREAT (Hancock): **Lamar Tilgner (Chair)**, Mt. Hood Rock Club, 200 SE Olvera Ave., Gresham, OR 97080, (503) 666-2905, lstilgner1@frontier.com

PAST PRESIDENTS COUNCIL: **Evelyn Cataldo**, Lakeside Gem & Mineral Club, 99509 Brandon, Kennewick, WA 99338, (509) 628-0170, cataldoevelyn@yahoo.com

PUBLIC LANDS ADVISORY: **Ben Odum**, 3511 N. Atlantic, Spokane, WA 99205 (509) 953-2470, rockroller_ALAA@yahoo.com

SLIDE/ VIDEO LIBRARIAN: **Darrell Watkins**, Yakima Rock and Mineral Club, P.O. Box 635,Tieton, WA 9894, (509)673-0085, darrell848@aol.com

RESOLUTIONS: **Fred Burton**, Golden Spike Gem & Mineral Society, 90 Lakeview, Tootle, UT 84074, (435) 882-8614, f7burton@gmail.com

SAFETY: **Tanya Sonner**, Southern WA. Mineralogical Society, 165 Tingle Rd., Winlock, WA. 98596, (360) 785-3909, chuckagate2@yahoo.com

SCHOLARSHIP: **Evelyn Cataldo**, Lakeside Gem and Mineral Club, 99509 Brandon, Kennewick, WA, 99338, (509) 628-0170, cataldoevelyn@yahoo.com

SHOW CHAIRPERSON 2016: **Janice Van Cura**, Willamette Agate & Mineral Society, Inc.,3448 NW Covey Run, Corvallis, OR 97330 (541)753-2401, jvancura@peak.org

SHOW COORDINATOR: **Pat Lambert**, Lakeside Gem & Mineral Club, 26106 S. Oak, Kennewick, WA 99337, palambert@charter.net

STAMPS: **Chuck Sonner**, Southern WA. Mineralogical Society, 165 Tingle Rd., Winlock, WA. 98596, (360) 785-3909, chuckagate2@yahoo.com

SUPPLIES: **Patty Amos**, Mt. Hood Rock Club, 15523 NE 215th Ave., Brush Prairie, WA, (360)892-3716, packrats2@msn.com

WAYS & MEANS: **Janice Van Cura**, Willamette Agate & Mineral Society, Inc.,3448 NW Covey Run, Corvallis, OR 97330 (541)753-2401, jvancura@peak.org

WEBMASTER: **Brad Larson**, Owyhee Gem and

NFMS SPECIAL COMMITTEES

FIELD TRIP CHAIRMAN: **Doug True**, Billings Gem & Mineral Club, 2622 Broadwater, Billings, MT 59102, 406.670.0506, dtruefossils12@yahoo.com

ROCKHOUND OF THE YEAR: **Bev Bockman**, Rock Rollers Club, P.O.Box 1326, Post Falls, ID 83577, (208) 773 5384, bockbb@aol.com

WEBSITE CONTEST: **Cheri George**, lizardwoman3@yahoo.com

AFMS COMMITTEES (NFMS Representatives)

AFMS 5TH VP & AFMS FIELD TRIP –Doug True, **ENDOWMENT FUND**- Chris Blickfeldt, **EDITORS HALL OF FAME-Open**, **NEWSLETTER EDITOR**-Beth Heesacker, **NFMS CLUB BULLETIN AIDS**-Ronna Watkins, **ROCKHOUND OF THE YEAR**-Evelyn Cataldo (chair) & Bev Bockman, **CONSERVATION & LEGISLATION**-Darlene Posthuma, **ALL AMERICAN AWARD**- Sean Hietpas, sean.hietpas@gmail.com, **INTERNATIONAL RELATIONS-OPEN**, **JUNIORS PROGRAM**-Audrey Vogelpohl, **PROGRAM COMPETITION**-Darrell Watkins, **PUBLIC RELATIONS-OPEN**, **SAFETY**-Chuck Sonner, **SCHOLARSHIP FOUNDATION**-Dee Holland (chair) & Evelyn Cataldo, **SUPPLIES AND PUBLICATIONS**-Tim Hoff, **JUDGE TRAINING COMMITTEE**-Dee Holland, **UNIFORM RULES**-Dee Holland, **WAYS AND MEANS**-Lauren Williams (chair) & Janice Van Cura, **WEBSITE**-Brad Larson, **WEBSITE CONTEST** – Cheri George.

THINGS YOU SHOULD KNOW

The **AMERICAN LANDS ACCESS ASSOCIATION (ALAA)** is a 501(c)(4) organization. Its purpose is to promote and ensure the right of amateur hobby fossil and mineral collecting, recreational prospecting and mining, and the use of public and private lands for educational and recreational purposes; and to carry the voice of all amateur collectors and hobbyists to our elected officials, government regulators and public lands managers. Your annual individual/couple membership fee is \$25 which helps support their activities. Club membership is \$50 per year. Send to Treasurer, P.O. Box 54398, San Jose,CA 95154. Make checks payable to: American Lands Access Assn. Applications can be downloaded at: www.amlands.org on the left side of the page. For more information contact: Lauren Williams, acting-President at: president@amlands.org or 957 E Elva Ave Idaho Falls, ID 83401

The **AFMS NEWSLETTER** is published monthly except Jan-Jul-Aug by the American Federation of Mineralogical Societies. Each NFMS member club should have three people (usually the Pres, Secretary, and Editor) receiving the AFMS Newsletter. If they are not, or if anyone else wants to subscribe (\$4.50 per year). Contact:: AFMS Central Off., Steve Weinberger, P.O. Box 302, Glyndon, MD 21071-0302 ce-bar62@aim.com Make checks payable to “AFMS”.

The **NORTHWEST NEWSLETTER** is the official publication of the Northwest Federation of Mineralogical Societies (NFMS) and is usually published ten (9) times per year. This publication is brought to you through your club membership in the NFMS. The purpose of the Northwest Newsletter is to keep all NFMS members informed of activities and events pertaining to the business and services of the Federation. The Newsletter is printed and mailed to approximately 3500 homes in six states by Oregon Lithoprint in McMinnville, Oregon.

For matters related to the Newsletter (i.e. content, advertising, etc.) contact the Newsletter Editor. For matters related to the Newsletter circulation (new members, address changes, etc.) contact Circulation.

SHOW COORDINATION. Your Federation provides a free service for NFMS members by listing your show in this Newsletter, on the NFMS website, two magazines (“Rocks and Minerals” and “Rock and Gem”) and the on-line calendar from “Lapidary Journal”. Please provide the date and time for the show, the club name and show title (if applicable), the location of the show, and most important a contact person with address, e-mail address and/or phone (e-mail is preferred). Please send your show information four to six months in advance to the Show Coordination Chairperson. If you see an error once your show is listed, or if your show is not listed, contact the Newsletter Editor.

SAVE STAMPS PROGRAM. NFMS members are encouraged to use and save commemorative stamps. The money generated from the sale of these used (cancelled) stamps is then donated to Cancer Research. The collected stamps can be sent to the **Stamps Chairman**, brought to the NFMS Annual Show or given to your Federation Director in your club.

ATTENTION CLUB TREASURERS

Where to send your money

To NFMS Treasurer for:

1. Dues and supplies
2. Donations for the general fund
3. Donations to Junior Achievement
4. Advertisement in this Newsletter

Send to: Lyle Vogelpohl, see Treasurer this page.

To NFMS Endowment Fund Treasurer for:

1. Donations to Endowment Fund
2. Memorial contributions

Make check payable to NFMS Endowment Fund, send to Endowment Fund Treasurer, 8810 37th Ave SW, Seattle, WA 98126-3617

To NFMS Scholarship Chairperson for:

1. Donations to AFMS Scholarship Fund
2. Memorial contributions to AFMS Scholarship

Make check payable to AFMS Scholarship Fund. Send to: Evelyn Cataldo (see Scholarship this page).

To AFMS Endowment Fund for:

1. Donations to AFMS Endowment
2. Memorials

Send to: See AFMS Newsletter

To ALAA Treasurer for:

- Memberships, new and renewals
- Donations

Make check payable to ALAA (American Lands Access Assn) Treasurer, P.O. Box 54398, San Jose, CA 95154

NFMS WEB SITE: www.amfed.org/nfms

NFMS NEWSLETTER AND WEBSITE ADVERTISEMENT

Members, Non-members, clubs, etc. can advertise in the Northwest Newsletter. This service is provided to help defray the cost of printing and mailing the newsletter and is encouraged by the Federation. The only criteria for the ad is that it be hobby related (e.g. rocks, equipment, grit, shows, etc.).

Ads for the Northwest Newsletter are \$1.50 per square inch.
Example: 3” x 4” ad = 12 inches
12 inches x \$1.50 = \$18 per issue of the Newsletter

For an additional 50% of the cost of the Newsletter ad, you can have the same ad placed on the NFMS website for the same length of time. The Newsletter ad must be purchased to receive this additional advertisement.

Do not send ads on colored paper because the back-ground will look gray in the ad. The Editor will send a billing statement to the customer which will include instructions to make payment to the NFMS Treasurer. For more information or questions, call, e-mail or write the **Newsletter Editor**



See the NFMS on Facebook
<https://m.facebook.com/groups/NFMS1>

PRESIDENT'S REPORT (continued from page 1)



CLEAN-UP” (by Shirley Leeson ALAA) in the “Home” under the Quartzsite Clean Up 2016.

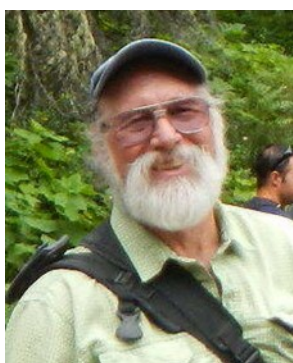
It is a very important time to protect our land for rockhounding and we need everyone's help. If your club has not joined the ALAA yet, please consider to join. And if your club has not renewed your membership, please renew as soon as you can.

NFMS/AFMS Combined Convention & Show will be held in Albany, OR in end of July and it is time for everyone to think about putting in cases or adding some displays at the show. I visited the

Oregon Agate and Mineral Society's Show at OMSI (Portland, OR) recently and learned that they are planning to display the “Symbols of Oregon in Stones” at the Show in Albany. It was created by Ruth Pitman and the club members using various crushed rocks. They will be sending in the information as pictures, dimensions and requirements to the Show Chair, Janice Van Cura (Willamette Agate and Mineral Society, Salem,

OR) to see if there will be a space to display the magnificent piece. I truly hope it will fit in well. If you have anything you would like to be displayed at the Show which will not fit in a 4' Standard Federation Case, like this “Symbols of Oregon in Stones” please consult with Janice at jvancura@peak.org to make sure it works out. It will be very nice to have something special from the NW to show off to the visitors from around the country!

1st VP's REPORT



Jim Bosley

1ST Vice President

Sage Grouse – What's Next?

Most of you are aware that the BLM has proposed the withdrawal of millions of acres of public lands in the Western United States from the staking of mining claims for the next 20 years to allow for the regrowth of sage brush and increase in the sage grouse populations. You and your Gem and Mineral Society should consider this a wakeup call and become part of the planning process for federal and state land use planning. First you need to understand that both federal and state agencies act within the direction given to them by congress and/or the state legislature. Second the decisions made by these agencies are not made on the spur of the moment. Our legislatures require the agencies to follow a process of soliciting comments from the stakeholders who will be affected by the decision. The decision making process can take several years to complete and comments are requested several times in the process. In the case of the sage grouse land withdrawal we provided comment near the end of the process when the agency published their draft final plan for comments. We will not know until the final plan is issued how it will affect the collecting of rock and minerals on BLM land identified in the plan.

This is just one of many plans the agencies will be implementing in the next years to meet their mandate from congress to manage the lands. Many of these plans will affect your ability to collect rocks and minerals on public lands, such as, wilderness areas, road access, closure and maintenance plans, wild life protection, etc.

Getting Involved

Many of you have sent petitions and letters to the BLM asking them to ensure that the needs of rockhounds are included in the final plan for the sage grouse. You and your Gem and Mineral Societies can get involved in the land use decision process by requesting the agencies put you on their mailing list for upcoming land use change planning. This will get you notified of upcoming changes and the dates of public meeting and comment due dates.

- Make a list of the rock hounding locations where you do most of your rockhounding. This will give you a target list of regional Forest Service and BLM offices you need to contact with a request to be placed their mailing list for changes in land use.
- Stop by and visit your local Forest Service and BLM office to check on changes that are currently in place. Road closures or restriction on collecting rocks, minerals, or petrified wood.
- Work with other Gem and Mineral Societies to ensure that a proposed change is being monitored and the appropriate comments sent in on time. The more comments the better.
- The Gem and Mineral Societies individually should form a committee to monitor the land use changes that affect their rockhound locations.
- The Gem and Mineral Societies in each state should form a state land use committee to coordinate their concerns, activities and comments.
- The state committees should provide information to the NFMS and ALAA organizations. This will increase the number of comments provided to the agencies and ensure that rockhounding interest are included in the decisions.
- Coordinate with other groups such as the ATV club that maybe affected by the proposed change to land use. In many states the ATV clubs are effective in working with the agencies to define what trails are going to be left open. The more comments on the need to maintain access to public lands the better.

I know that this sounds like a lot of work on the part of a Society, but if you are NOT willing to advocate for your use of public lands, then who will? If we each do a small piece then it will not seem so overwhelming There are a variety of organizations that want to see the public lands used differently than a rockhound does, wilderness, wild river, hiking, wildlife preserve, etc., all which could impact your ability to collect rocks on public lands.

I challenge each of the societies in the Northwest to form a land use committee and get on the mailing list for the agencies in your region and state. I challenge the societies in each state to set up a method to communicate with each other concerning land use. Work with committees from surrounding states concerning rockhounding issues and land use. Many of us have field trips to other states to collect rocks. I challenge the local societies and state land use groups to work with the NFMS land use committee and ALAA to ensure that the needs and concerns of the 6000 + members are addressed with the agencies responsible for changes to land use on public lands.

2nd VP's REPORT



Keith Fackrell 2nd Vice President

See Keith's membership growth article on page 6



From the Editor's Rockpile By Beth Heesacker

First, if you see any formatting changes in this edition it is due to having to change to Publisher from Word for editing it since Word is constantly crashing on me and I have not had time to hunt down the cause. If you notice that anything is missing (especially on page 2) let me know and I will see if I can hunt it up and get it back in place.

Second, please read the two articles on pages 6 and 7 on growing your club. I did not have room to put them in last month but made it this time. Very good information. Notice both mention an emphasis on our juniors.

Now to the good things in life: rock and rockhounding. The weather still has not dried out enough to go out into the field but our club had a wonderful field trip to the Rice Museum of Rocks and Minerals in Hillsboro, OR. I recommend that if you are anywhere in the Portland area that you head west out Highway 26 and check out this magnificent museum. You will find minerals, petrified wood, examples of the lapidary arts, faceting, fluorescent minerals and fossils. All are very high quality exhibits.

Don't forget in the excitement of the planning for the AFMS/NFMS Meeting that there also is the upcoming Mid-Year NFMS Meeting in Ken-niwick hosted by the fabulous Lakeside Gem and Mineral Club. See their announcement below.

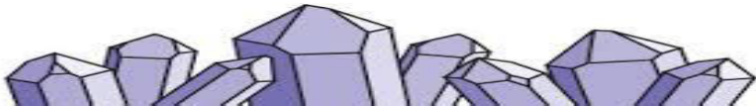
2016 NFMS Mid Year Meeting April 16, 2016

Another year has come and gone. The 2016 NFMS Mid Year Meeting will be held in Kennewick Washington in Building #16 at the Benton County Fairgrounds, 1500 S. Oak Street (see below for directions). This is the same location as it has in the past nine years (except 2015) and coincides with the 20th Annual Lakeside Gem and Mineral Club which is held at the same location.

On Saturday April 16 the mid year meeting will begin at 1 PM, with registration starting at 12:30. (NOTE THE TIME CHANGE FROM YEARS PAST). There will also be a ALAA meeting for those that are interested beginning at 9:00 AM that morning. There will be a food vendor available for lunch and dinner that day in conjunction with the ongoing Show. Hours for the Show on Saturday are from 10 AM to 5 PM and on Sunday from 10 AM to 4 PM.

RV camping is available at the Fairgrounds with electricity and water available for \$10/night. If you plan to use these facilities please send an email to Larry Hulstrom at larryhulstrom@live.com prior to April 1 indicating date of arrival and duration of stay so an accurate count can be kept and space can be planned. Payment will be collected upon arrival at the Fairgrounds. There are a number of motels throughout the immediate area in Kennewick. Information about a few of these has been provided below.

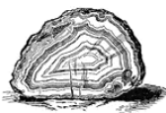
The members of the Lakeside Gem and Mineral Club would like extend a warm invitation to join us for the NFMS Mid Year meeting and encourage you to stay over on Sunday to attend our show. In addition to 11 dealers, we will have about 50 displays, a fluorescent mineral display, a silent auction, a Kid's Corner, demonstrations, and door prizes. On Sunday morning from 7 AM to noon there will also be tailgating outside the show building for anyone interested. Come join your fellow rockhounds for a weekend of fun and fellowship and take in the sites that the area has to offer.



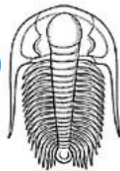
2016 GEM SHOW Hosted By Lakeside Gem & Mineral Club 20th Annual Show

Saturday, April 16th – 10 am to 5 pm
Sunday, April 17th – 10 am to 4 pm

Benton County Fairgrounds
1500 S. Oak St., Kennewick, WA



Adult Admission \$5 (good for both days)
Children 14 and under FREE
with paid adult admission



Events & Activities Include:	Demonstrations Include:
40+ Collectors' Exhibits	Cabochon Fashioning
Great Door Prizes	Gemstone Faceting
Gem, Mineral, Fossil & Jewelry Dealers	Gem Trees
Fluorescent Displays	Sphere Making
Kid's Korner – Games & Crafts	Silversmithing
Silent Auctions	Wire Wrapping
Geode Cracking	Jewelry Fabrication
Tailgating – Sunday 7am to noon	

Bring This Flyer To The Show For
\$1.00 Off Price Of Admission



2016 NFMS AFMS Show Update July 29th to 31st, 2016, Albany Oregon

The show committee is getting excited. We have some great dealers coming, with just a few spaces left. For a current list of dealers you can check out the WAMS webpage at wamsi.org and go the show page.

We have starting working on the speaker line up . We are planning on have several presentations each day. Julian Gray from the Rice Museum and several fossil talks are all ready on the schedule. As well as a great look at what is found deep in the rocks using a microscope.

We are organizing an authors table, and other informational displays . If you are interested in being a demonstrator or have a special display that you would like to show off let us know. There will also be a silent auction and an oral auction on Sunday. If you have some spare material from your collecting consider bringing some to help the federation and to show those guests coming from outside our federation just what we have to offer.

Also, Albany has some other attractions if you want a break from rocks. There is a nice historic district that you can stroll or drive around. Also a group that is hand carving animals for a carousel for Albany. If you want to wet your whistle there are various winery and brewery options in the area for tasting. There is even a cider house close by. So we hope you will come join us for a few days and enjoy the show and get a look at the what else the Mid-Willamette Valley has to offer. Then after the show you can head east to Prineville, Oregon for the Federation Field Trip.

Janice Van Cura, Show Chair
jvancura@peak.org



2016 NFMS Mid-Year Meeting
Date: Saturday, April 16, 2016
Time: 1 pm
Place: Benton County Fairgrounds
1500 South Oak, Kennewick, WA
(During Lakeside Gem and Mineral Club’s Annual Show)

2016 AFMS Annual Meeting
Date: Thursday, July 28, 2016
Time: 9 am
Place: Linn County Fair & Expo Building
Albany, Oregon
(before the Willamette Agate and Mineral Society’s Annual Show)

NFMS Annual Meeting
Date: Friday, July 29, 2016
Time: 4pm
Place: Linn County Fair & Expo Building
Albany, Oregon
(During Willamette Agate and Mineral Society’s Annual Show)



How Do We Get Juniors Interested in Rocks?
By Audrey Vogelpohl, NFMS Junior Chair and
Linda Groah, Willamette Agate & Mineral Society Junior
Advisor

What person, young or older, when walking on a beach or trail, doesn't pick up a pretty rock. What is it? What to do with it? Combining the adults and their knowledge, with the inquisitive minds of young people, and you have our Future Rockhounds. The NFMS wants to help you.

We are going to have a cracker barrel session at the convention in Albany, Oregon in late July. Advisors of several of our Junior Clubs are eager to share what they have done .. and including the not so successful activities. How do you start a Junior Program? Are you going to babysit? -- or involve the parents? How to channel all that youthful energy and keep a safe, secure and wholesome environment? Where can I find activities? WOW! Have you seen the AFMS Badge Program Manual? What activities and display ideas can Juniors use at your own club's show?

Got questions and ideas? Everyone is welcome ... we'll see you in Albany. And remember ... the Juniors are our future.

Junior Achievement Deadline - Be a Mentor
By Audrey Vogelpohl, NFMS Juniors Chair

The NFMS Junior Members can apply for the Junior Achievement Award, but they just might need your help. You are likely aware of how deadlines creep up FAST, and the deadline for the Juniors to postmark their application is Friday, April 1, 2016. The application and guidelines are on page 10 in the January 2016 issue of the Northwest Newsletter. Let's take time to mentor a Junior and help them win monetary awards and/or certificates. We will be looking forward to honoring them at the NFMS Annual Meeting in Albany, Oregon on July 29, 2016.



Happy late
Valentine’s Day
to all!





What Has Timpanogos Gem & Mineral Society Done to Increase and Maintain the Membership Level in Our Society? In Both Juniors and Adults? By Keith Fackrell

We have set dates, times & places to hold our functions.

Our regular club meetings are held the last Wednesday of each month, at 7:00 unless otherwise notified.

Our Jr. Club meetings are held the second Monday of each month, at 7:00 P.M. unless otherwise notified.

The TGMS Spring Parade of Gems show is held the third Weekend of March each year. This helps the show dealers plan their yearly calendar.

At the time of the 2007 show, we were advised we would have to move to a new venue, the one we were in at the time was to be raised that year. A new venue was Located in Spanish Fork, Utah, where we are today. This move gave us about twice the space to hold the show.

In the year 2010 we started the ground work to implement the Jr. Club. This was discussed in our Board meetings, we did have our nay sayers, but after considerable discussion, there was enough support, so we went ahead with the plan.

Now, we needed a Leader for this group. I was approached by one of our members who suggested that she and her husband would be willing to lead the Jr. Club. We discussed qualifications and etc. We determined these two people were the ones we were looking for. So Charlotte and Jerry Davis accepted the position and are still doing a GREAT job. This was no mistake on our part!

For a Junior to join, there is a requirement that at least one parent or guardian must be a member of TGMS, also the parent or guardian MUST attend the Jr. Club meetings and ALL activities that their Junior member(s) attend. We are not there to tend children, but to teach them. This all works very well. During the show, the Jr. club has a large booth set up, consisting of five, eight foot tables, and the Jr. members help staff the activity. They have a great time.

There are several other attractions available for all to enjoy, including the wheel of fortune, black light display, touch table, grab bags and also several of our dealers are offering items for sale that

fall into a price that the young attendees can afford to purchase. While you are at the show you will also see all of the other attractions offered at most rock shows.

Before leaving, all those attending the show will have the opportunity to visit the MEMBERSHIP booth, where they will be able to join TGMS.

During the spring, summer and fall our field trip chairmen Nancy Nusink & Johanna Letham put together several field trips (about eight) and arrange for leaders to take groups to the designated areas.

The executive board and the board of directors are always looking for new, informative and interesting subjects to have presented at our monthly meetings.

I know that most rock clubs are doing the same as TGMS. It is frustrating when you do everything you are able to think of, even so your membership falls off. I will say if I was to name one thing that has helped our membership increase the most and to help keep it up, it would have to be the initiation of our junior club.

When a Junior signs up, you get one or more youth members plus one or two parents. Several of the parents attend meetings with their Juniors and also attend the regular club. If you have an active Junior club, GREAT. If you don't, I urge you to get one started. It may surprise you what it can do for your club. A family who plays together stays together. I feel when our Juniors become involved in the NFMS Junior Achievement Award program it will create even more excitement. Remember, Today's youth will be tomorrow's leaders.

AFMS and NFMS Deadlines:

All American Club Yearbook Award

NFMS Deadline: March 22, 2016

AFMS deadline: April 15, 2016.

Check with your regional chairs for their deadline.

Bulletin Editor's Contest:

NFMS deadline: March ,1 2016

Webmaster Contest:

NFMS deadline: March 1, 2016

Junior Achievement Award:

NFMS deadline: April 1, 2016

AFMS/NFMS Case Registration:

June 29, 2016

AFMS/NFMS Meeting Registration:

NFMS deadline: June 30, 2016





Idaho Gem Club Experiences in Attracting (and Retaining) New Members

**By Philip S. Neuhoff, Ph.D.
Outgoing President, Idaho Gem Club, Inc.**

Northwest Federation President Hidemi Kira set me a note a little while ago commenting on our club's strong membership gains in the last year and asking if I could share how we accomplished such a feat. To be honest, I have rarely counted our members during my time on our Board of Directors and as President. Like Hidemi, I was surprised when I saw the data...our club had grown from just under 200 members to nearly 400 in one year. I was also pleased, as like most clubs, we work hard to recruit and retain new members.

In part, our strength in numbers is partially a function of good circumstances. The Idaho Gem Club, Inc. is one of the oldest clubs in the country, and we have a long history of contributions to the hobby. We are located in an area with abundant collecting opportunities, and through the club's history we have protected some of the more storied localities for collecting by claiming them (examples include the Whangdoodle opal deposit, the Beacon Hill agate nodule locality, portions of the Graveyard Point agate district, and the Queenstone jasper deposit). We are also situated in a reasonably large Metropolitan Statistical Area with around 650,000 people...more people means more potential members. Despite these advantages, recruiting new members, and even more important: retaining them so they continue to be part of a strong club, is a never-ending effort. Based on our experiences in the last few years, I will try to share a few approaches that have served our club well.

Have a strong regular program of activities: People look to join a club for the benefits. In the case of a club like ours, they are hoping to learn more about the hobby and have the opportunity to go on collecting trips, etc. We have a very active field trip program during the months that permit it, and open these trips to guests in order to attract new members. Our club owns a nice collection of lapidary equipment, and access to that equipment is another great benefit (to be fair, like other clubs, workshop space and access have been challenging at times, though we hope a new home we have found for our workshop will provide even more incentive to be in the club). We also have monthly meetings like most clubs. It is these meetings that I think have the biggest impact on decisions whether to be in the club. Let's face it, meetings can be boring. Because our club is a non-profit corporation, we have a certain amount of "business" that must be presented at the meetings. We also have door prizes, a program, and refreshments. These features have been part of the meetings as long as I have been in the club. What we have changed, if anything, is that the program and other parts of the meetings are now much more focused on members sharing their knowledge about the hobby, and less about the business stuff. What we have found is that new members in particular wanted more sharing and learning time.

Be family friendly: A strong and long-lived club requires a broad, healthy age distribution. Older members (who are often, but not always, long-time contributors to the hobby) are an essential resource for a club: they bring wisdom, the ability to volunteer when others have to work, and charm (among other things). Kids (and their parents who tend to fill in the age gap) are the future of the club. Our club has worked very hard to attract families with kids and provide exciting activities for the kids. ALL club functions are family friendly and kids are welcome to join field trips, use our workshop, and join our meetings. At meetings, we have a special concurrent program where the kids learn about Earth science and come away with treasures donated by club members. I don't have hard data, but I suspect a significant portion of our members retained past the first year have children that benefit from our programs.

Be visible: For people to join the club, they need to know about it. Our club maintains a nice website, and that certainly helps (that is how I learned about the club). Nothing beats face to face exposure, though. Our club hosts an annual Gem Show, and we have certainly stepped up efforts to recruit new members from the nearly 3000 adult + 1000 youth attendees we see every year (they are a good captive audience that is already interested in the hobby at some level). We have also spent a lot of time reaching out to interest groups that dovetail with our hobby. Examples include a local gold prospecting club, local science teachers, and the metaphysical community. It is also important to follow up when they contact you as well. For instance, a local group that decorates gourds (often with lapidary materials) contacted us about exhibiting at their show; we did, and made a lot of great contacts and some new members. There is one other avenue for recruiting that has been especially valuable for us: our local rock shop. People new to the hobby often visit a rock shop to get started and ask questions. We are fortunate that our local shop, Stewart's Gem Shop, is owned by a family of long-time members and club founders. They have a stack of applications, and take the time to sell their clientele on joining the club. They recruit a lot of members for us. Similar relationships with other points of entry to the hobby (museums, teachers, bead stores, etc.) would be equally effective if there is personal contact and recruitment.

So what is the secret to our success? It is probably all of the above. Of the things I mentioned above, probably the two most important are 1) making sure that club activities meet the needs and desires of current and potential members (especially those with kids), and finding ways to increase your face to face recruitment activities. I hope that the rest of the clubs in the Federation can find similar success...each other's strength makes all of us stronger.

Buy a Ticket-Win a Prize By Judi Allison

Tickets are now available for the AFMS Endowment Fund Drawing that will be held at the combination AFMS/NFMS Show and Convention in Albany, Oregon the end of July. Why buy a ticket? You could win one of a number of nice donated prizes, but better yet, your prize could be support of such things as the Junior Badge Program, judges training, digitizing slide programs to videos, and production of video programs to be distributed to the individual Federations to name a few.

You can get tickets from me, Judi Allison, by sending an email with your name and address to jall@eotnet.net or calling me at 541-720-4950. I will also be at the midyear meeting in Kennewick, Washington with a supply on hand. They are \$5.00 each or 5 for \$20.00. Let's support the Endowment Fund and in turn support the American Federation.





CFMS Position Statement on The New Southern California National Monuments

In light of recent developments the California Federation of Mineralogical Societies has decided to refrain from sponsoring, leading or participating in any collecting fieldtrips into the stated below regions of Southern California until the final Management Plans are finalized, published and become effective.

Collecting of Rocks, Minerals and Fossils in the Southern California Deserts and National Forests was delivered a catastrophic disappointment this

year with the creating of four new National Monuments by Executive Order. In 2015 the San Gabriel National Monument was created and closed several collecting areas which now lie within its boundaries. On February 12, 2016 President Obama created three new National Monuments in the deserts of Southern California. The Mojave Trails National Monument, the Sand to Snow National Monument and the Castle Mountains National Monuments all were created by Executive Orders. Within these monuments lies some of the best Rockhound and collecting areas in California and to list just a few: The Cady Mountains, Lavic Siding, Afton Canyon, Oro Belle and Big Chief Mines and many abandoned mines in the Southeastern San Bernardino Mountains with mine shafts, prospecting pits, and tailing piles of interest to Rockhounds.

The following is quoted from the Presidential Proclamation of the Mojave Trails National Monument. (It is included in each of the Presidential Proclamations.)

"All Federal lands and interests in lands within the boundaries of the monument are hereby appropriated and withdrawn from all forms of entry, location, selection, sale, or other disposition under the public land laws, from location, entry, and patent under the mining laws, and from disposition under all laws relating to mineral and geothermal leasing, other than by exchange that furthers the protective purposes of the monument or disposal for the limited purpose of providing materials for repairing or maintaining roads and bridges within the monument consistent with care and management of the objects identified above."

"For purposes of the care and management ... the Secretary, through the BLM, shall within 3 years of the date of this proclamation prepare and maintain a management plan for the monument and shall provide for maximum public involvement in the development of that plan including, but not limited to, consultation with tribal, State, and local governments."

"Warning is hereby given to all unauthorized persons not to appropriate, injure, destroy, or remove any feature of the monument and not to locate or settle upon any of the lands thereof."

Again, In light of these developments the California Federation of Mineralogical Societies has decided to refrain from sponsoring, leading or participating in any collecting field-trips into these regions of Southern California until the final Management Plans are finalized, published and become effective. More information will be distributed as it becomes available.

Below are hyperlinks to the Presidential Proclamations

Presidential Proclamation -- Establishment of 3 National Monuments in Southern California - February 12, 2016

- [Mojave Trails National Monument](#) - The Cady Mountains, The Marble Mountain Fossil Bed, Bristol Mountains, Piute Valley and Cadiz Valley, Ship Mountains, Little Piute Mountains, and Sacramento Mountains, Afton Canyon, Lavic Siding, Chuckwalla Spring, Hummingbird Spring, Barrel Spring, Fenner Spring, Cadiz Dunes, Amboy Crater, Pisgah Volcano lava flow are all inside the monument.
- [Sand to Snow National Monument](#)
- [Castle Mountains National Monument](#)
- [San Gabriel National Monument](#) in 2015

Thank you for you support and understanding on this important issue.

John Martin - President

California Federation of Mineralogical Societies

cfms2016_president@cfmsinc.org

February 15, 2016



Lord Willing and the Creek Don’t Rise

By Bert Kae-Je’

Packed for the week, blankets and beds, Maglite & tumbler,
Four wheels rolling on-down, 75 miles south of Arlington,
Greeted by hundreds of windmills, hills and flowers of the desert,
Old recluse barns of yesteryear with cattle corrals ransacked & fallen,
Beautiful, yet the abstract, designs of dead deciduous trees.
We look and see, Lord was willing but the creek dried up.

The week holds the great extraordinary for work & play,
No TV, and for one whole week our mind isn’t bombarded,
With Syrian immigration, Isis and neighborhood violence,
Marrying off of ten year old girls and sex trafficking,
Smells of Pacific NW fires or Hurricanes of the South East,
Ningen Warriors, Doc Martin, business news & commercials.
Lord willing that I should know His Peace, regardless of the rise.

Spaghetti, chicken, brats, roast beef, pears, peaches, & apples
All so good, I enjoyed immensely but missing my biscuits,
But be assured, Audrey will bring me one--maybe next year,
Rejuvenated with friendship around pickles and turkey slices.
Cooks baked and boiled, Lord supplied, and creek was stable.

Massive dark blue velvet skies with unmeasurable stars,
Enough to appease any stargazer or gemologist,
Comfort of a familiar cabin and a repeat roommate,
No longer just an acquaintance but now, Linda, a friend,
Forgot my hair brush---but who cares---not a soul,
Lord sees the inner person whether or not the creek doth rise.

Even at this glorious retreat, things can happen,
Immense pain, fractured and dislocated shoulder,
Atrial Fibrillations and hospitalization take him away,
Trillions of innocuous hoots & hollers,
Yet, other laughs so disturbing I went crazy,
Lord knows, cares, and renews even when the creek doesn’t rise.

Latrines so stinky my olfactory nerves a twitch,
Gravel so course I nearly fell several times,
A brown Recluse Spider by the shower,
Locked out, Ahuh, by my special room-mate,
But of course she’ll let me in..... For a fee.
Lord willing, and the creek don’t rise.

Lyle and Lemar helping me slab a huge brown Rhyolite and
Learn more about the value/lack thereof for gem stones,
Apache tears, Labradorite, Malachite-Azurite, Moukaite,
Jade, Calcidney, Dillion Blue Agate, and “Idaho Blickfeldt Pokadot”
Lord willing and the creek shows off the beauty of the stone.

Ultimately concluding that I CAN’T make crosses of soft gem stones,
Use a washtub, bailing wire, a winder-upper and cast the centrifuge way,
Mug up and acquire new concepts, making trundling flower-child rings,
Endless, endless, interminable, help of Chris and Peggy,
Home I go to buy parallel vise plyers and a mini drill,
Lord willing and the creek anticipates change.



Advise,
tutorials,
and guid-

ed suggestions for days ahead,
Finding all the little triangle stones for a future tumble,
Carol’s advice for creating a huge pictorial intarsia,
Chris tells me turn the temperature of the flask up,
And the silver will do better if lower I melt.
Lord willing and the creek will still flow.

Spatially disoriented and yet Louise,
Gets me to sprue in the right direction,
Lyle introduces me to a new Shell Rock Saw Oil,
Audrey, introduces me to new ideas for juniors,
Lord was pleased, and the creek got restored!

New friends—Paul, Cindy, Roberta, Rob, Theresa and Kyle,
And finally retaining names of old—Jan, Scott, Karen, Mary,
Able to unload a whole bunch of swap for a few choice items,
Able to go home with a more compact and lighter cargo,
Lord was watching, and the creek debrided it’s load.

On the way home, Sunday Morning, feelin’ high,
Sorta sad to go, but journey with God and see the wonder,
Young deer, bunny rabbits, magpies, and mountains,
Little churches, home spun restaurants and shops,
Hills and mountains of ecological & environmental wonder,
Twists and turns repeat over and over- 15-25 mph,
Lord willing but sometimes the creek runs slowly.

Intense, refreshingly affirming, and now homeward bound,
Our friends, roommates, instructors and familiar rock-hounds,
Again we’ll gather and see one another at Hancock Field Station,
So we hope, but meanwhile, be well and take care,
Lord willing and the creek don’t rise!

Note
Bert K-J attended the Rock Hound Retreat, located at OMSI-Hancock
Field Station, between Fossil and Antelope OR, for her 5th year. Each year
she tries to express her **appreciation for wonderful instructors and a joyous
experience** in verse. She adds, she is but a want-a-be poet. Bert is Treas-
urer for the Lakeside Gem & Mineral Club, in Kennewick, WA.





ROCK SALE

Tons of rough—\$1 per pound
Jewelry 1/2 price
3,000 cabochons
Beads
Faceted gems
Findings
Fluorescents
Eggs
Machinery
Silversmithing tools



10am—6 pm
May 6—15, 2016
Jeannette and Howard Bushman
14901 SW Glade Lane
Sherwood, OR
503-625-5177



Umpqua Gem &
 Mineral Club
 presents its 46th
 Annual Rock Show

Carnival of Rocks

Saturday, May 7 – 9am to 5 pm
Sunday, May 8 – 10am to 4pm
 Free Admission – donations appreciated
 Food Concessions
Douglas County Fairgrounds
I-5 exit 123 * Roseburg, OR

DON'T MISS THE FUN!
 Gem and Mineral Displays
 Rock and Jewelry Dealers
 Demonstrations
 Door Prizes * every 1/2 hr.
 Silent Auction * Raffle Prizes
FREE Kids' Activities:
 Rock Hunts: Sat: 11am – 1pm – 3pm
 Sun: 1pm – 3pm
 Rock Painting by **Michael's**

Your ad could be here!

***\$1.50 per square inch per month and
 an additional \$.75 per square inch if you
 also want it posted
 on the NFMF website.***

***Contact the editor at nfmseditor@coho.net
 with any questions.***

***Advertising supports the publishing of
 this newsletter. We are the only
 Federation that emails or snail mails
 their newsletter to ALL members of the
 Federation.***

Thank you!



Rockhounds of the Year

Ken Schmidt, a **West Seattle Rock Club** member since 1996, is known to most members as a master tumbler of rocks -- enough to fill over 100 grab bags for each of the last several shows. A tireless mentor for our Junior members, including the giving of tumbled rocks at meetings -- for "youngsters of all ages". A secondary title is chef at our annual picnic. He has presided as club president and chaired many committees -- volunteering to help where/when needed. Ken is a true gem of a rockhound.

Submitted by WSRC Executive Board

The **Clackamette Mineral and Gem** members are pleased to present **Larry and Linda Arendt** as our “Rockhounds of the Year.” They have been members since 1980.

Larry has served as President, Show Chairman, Field Trip Coordinator, Federation Director and Secretary. Larry is our resident auctioneer for club events and the voice of CMGC at our annual show. A great club ambassador, he holds workshops for Boy and Girl Scout troops and teaches tumbling and cabochon making to members and the public. In addition, Larry is involved with the Lions Club coordinating sight screening for children and active in environmental issues with the Marion County Soils and Conservation District.

Over the years, Linda has served the Club in many different ways and helped out in various show departments. Linda and Larry have always worked well as a team to the benefit of CMGC. We are very fortunate to have such dedicated members.

All American Yearbook Deadline Approaches

By Sean Heitpas, Chairman



Submissions for your club yearbook will be needed by March 22nd. This is a great way to see how your club is doing and where improvements might be utilized. I set this early deadline in anticipation of receiving many entries. The top three will be sent to the AMFS. Hope to see you in Kennewick!

NFMS Clubs’ Show Schedule

Feb. 27 & 28 Sat – 10 – 6 Sun – 10 – 5	Idaho Gem Club	Expo Idaho 5610 Glenwood Street Boise ID 83714	Brent Steward 208 342 1151 rocksbybrent@gmail.com
March 4 & 5 Fri – 8:30 – 6 Sat – 9 – 5	Panorama Gem and Mineral Club	Stevens County, Fairgrounds, Columbia Avenue, Colville WA	Bill Allen 509 935 8779 or 509 936 2446 sagostore2@plix.com
March 5 & 6 Sat – 10 – 6 Sun – 10 – 5	East KingCo Rock Club	Pickering Barn 1730-10th Avenue NW Issaquah WA	Cindy Smith cndysmith@gmail.com PO Box 2203, Redmond WA 98073
March 5 & 6 Sat – 10 - 6 Sun – 10 - 5	Owyhee Gem & Mineral Society	O’Conner Field House 2200 Blaine Caldwell, Idaho	Darell Ehlers 208-674-1213 ddehlers@fmtc.com
March 11- 13 Fri & Sat – 10 – 5 Sun – 10 – 5	Tualatin Valley Rock and Gem Club	Washington County Fair Cmplx, 873 NE 34 th Avenue, Hillsboro OR	Rose Jackson ljeweledrose@gmail.com PO Box 641 Forest Grove OR 97116, tvrgc.org
March 12 - 13 Sat – 10 – 6 Sun – 10 – 4	Magic Valley Gem Club	Twin Falls County Fairgrounds, Merchant Building #1, 215 Fair Avenue, Filer ID	Shirley or Rocky Metts 208 423 4827 rmetts@magicvalleygemclub.org
March 12 - 13 Sat – 9 – 5 Sun – 10 – 4	Rock and Arrowhead Club	Klamath Co. Fairgrounds 3531 South 6 th Street Klamath Falls OR	Marv Stump 541 882 8341 POB 1803 Klamath Falls OR 97601 Garwin Carlson 541 882 8276
March 12 - 13 Sat – 10 – 6 Sun – 10 – 4	NW Montana Rock Chucks	Flathead County Frgrnds, Grandstand Building, 265 North Meridian Road Kalispell MT	Lloyd Fager oldgrayelf@sbcglobal.net 608 436 0780
March 18 - 20 Fri & Sat – 10 – 7 Sun – 10 – 5	Timpanogos Gem and Mineral Society	Spanish Fork Fair Grounds 475 South Main Street Spanish Fork, UT	Karl Powell 801 319 6115 timpanogosrock@gmail.com
March 19-20 Sat – 9 – 6 Sun – 10 – 5	Hellgate Mineral Society	Hilton Garden Inn 2730 North Reserve St. Missoula MT	Bob Riggs 406 543 3667 robert.riggs3@gmail.com
March 25-27 Fri & Sat – 10 – 6 Sun - 10 – 4	Rock Rollers Club of Spokane WA	Spokane County Fair & Expo Ctr, N. 604 Havana & Broadway, Spokane WA	Vonnie Dillon 509 951 8173 showchair@rockrollers.org

NFMS Clubs’ Show Schedule

March 26 - 27 Sat – 10 – 6 Sun – 10 – 5	Mt. Baker Rock and Gem Club	Bloedel Donovan Comm. Cntr., 2214 Electric Avenue, Bellingham WA	Lori Nettles 360 961 7873 lorinhardy@yahoo.com www.mtbakerrockclub.org
March 26 - 27 Sat – 10 – 6 Sun – 10 – 5	Sweet Home Rock and Mineral Society	Sweet Home High School Gym, 1641 Long Street Sweet Home OR	Joe Cota 541 451 2740 or Ed Anderson 541 944 2124 ela4rocks@gmail.com PO Box 2279 Lebanon OR
April 8 - 10 Fri – 9-6 Sat – 10 – 6	Golden Spike Gem and Mineral Society	Golden Spike Event Ctr, Weber County Fairgrnds, 1000 N 1200 W, Ogden UT	Deborah Blake 385 205 9187 gemshow@goldenspikegem.org
April 8, 9 & 10 Fri & Sat 10 - 6 Sun – 10 – 4	Yakima Rock and Mineral Club	Central Wash State Fair Grounds, Modern Living Building, 1301 South Fair Avenue, Yakima WA 98901	Dwayne Drake 509 731 5794 ya-kima_rockhounds12@yahoo.com PO Box 326, Yakima WA 98907
April 9 & 10 Sat – 10 – 6 Sun – 10 – 5	Idaho Falls Gem and Mineral Society	Idaho Falls Recreation Ctr, Corner of Memorial Drive and B Street, Idaho Falls ID	Dave Gunderson 208 523 2355 or Kevin Landon 208 357 3847 PO Box 2362 Idaho Falls ID
April 15 – 17 Fri & Sat – 9 - 5 Sun – 10 - 4	Willamette Agate and Mineral Society	Polk County Fairgrounds 520 S Pacific Hwy W Rickreall, OR 97371	Bob & Etheleen Flippo 503-623-4241 reflippoo@hotmail.com
April 16 & 17 Sat – 10 – 5 Sun – 10 – 4	Lakeside Gem and Mineral Club	Benton County Frgrnds. 1500 South Oak Kennewick WA	Mary Lou Omstead 509 783 2798 PO Box 6652 Kennewick WA 99336
April 16 & 17 Sat 9 – 6 Sun 10 – 6	Maplewood Rock Club	Maplewood Club House 8802 196 th Street SW Edmonds WA	Cindy Wright cindykw1@hotmail.com 425 493 6155
April 22 - 24 Fri & Sat – 10 – 5 Sun – 10 – 4	Mt Hood Rock Club	W.P. Jackson Armory, 6255 NE Cornfoot Road Portland OR 97218 [NOTE LOCATION CHANGE]	Wayne King mhrctshow@gmail.com 503 284 7195
April 23 & 24 Sat – 10 – 5 Sun – 10 – 5	West Seattle Rock Club	Alki Masonic Temple 4736 40 th Avenue SW Seattle WA	Diane Christensen diane@purms.org 206 439 3606 www.westseattlerockclub.org
April 23 & 24 Sat – 9:30 – 5 Sun – 10 – 4:30	Grays Harbor Gem and Geology Society	Elma Fairgrounds 43 Elma-McCleary Road Elma WA	Leroy Sisk and Gary Emberley , 624 Fairmont Place Aberdeen, WA 98520 360 533 6196 melissa624@hotmail.com
April 30 - May 1 Sat – 10 – 6 Sun – 10 – 5	Everett Rock and Gem Club	Everett Com. College Walt Price Student Fitness Center, 2206 Tower Street, Everett WA	Fritz Mack 425 232 0809 rockngemmack1@gmail.com PO Box 1615 Everett WA 98206
April 30 & May 1 Sat – 10 – 5 Sun – 10 – 4	Billings Gem and Mineral Club	Al Bedoo Shrine, Aud., 1125 Broadway Ave, Billings MT	Doug True dtruefossils12@yahoo.com 406 670 0506
May 7 & 8 Sat – 9 – 5 Sun – 10 – 4	Umpqua Gem & Mineral Club	Douglas County Fairgrounds, I-5 Exit 123 Roseburg OR	Sue Woodman 541 672 3486 rock-sandhorses3@gmail.com or Eileen Paul 541 672 5229 bead-patch@mydfn.net
May 7 & 8 Sat – 10 – 5 Sun – 10 – 4	Bozeman Gem and Mineral Club	Gallatin County Frgrnds Building #1, 901 North Black, Bozeman MT	JerryHancock jaegers@bresnan.net PO Box 11001 Bozeman MT 59719
May 14 & 15 Sat – 10 – 5 Sun – 10 – 4	Hatrockhounds Gem and Mineral Society	Hermiston Conference Ctr 415 Highway 395 South Hermiston OR	Mike Filarski, 541 571 2593 stonemorlin1@netscape.net
May 21 & 22 Sat – 10 – 6 Sun – 10 – 5	Bitterroot Gem and Mineral Society	First Interstate Center, Ravalli County Frgrnds 100 Old Corvallis Road Hamilton MT	Steve Vieth 406 381- 7597 viethsteve88@gmail.com
June 3- 5 Fri & Sat – 10 – 5 Sun – 10 – 5	Puyallup Valley Gem and Mineral Club	Swiss Park 9205 198 th Avenue East Bonney Lake WA 98390	Nancy LeMay bees2knees@att.net 253 985 5784 info@puyallupgemclub.org
June 4 & 5 Sat – 9 – 5 Sun – 10 – 4	North Idaho Mineral Club	Kootenai County Frgrnds, 4056 North Government Way, Coeur d’Alene ID	Dean Hutchinson 208 686 9156 PO Box 1643 Hayden ID 83835
June 11 & 12 Sat – 10 – 5 Sun – 10 – 5	Butte Mineral and Gem Club	Butte Civic Center Annex 1340 Harrison Avenue Butte MT	Pete Knudsen 406 496 4395 PO Box 4492 Butte MT 59702
July 16 - 17 Sat – 10 – 5 Sun – 10 – 5	Darrington Rock and Gem Club	Manford Grange 1265 Railroad Avenue Darrington, WA	Ed Lehman 9120 20 th Street SE Lake Stevens WA 98258 wsmced@hotmail.com 425 334 6282 (cell 425 760 2786) or Angela Moore angela51726@gmail.com 360 436 2107
July 29-31 Fri – 10 – 6 Sat – 10 – 6 Sun – 10 – 4	Willamette Agate and Mineral Society AFMS and NFMS MEETINGS	Linn County Expo Center, Albany Oregon	Janice Van Cura 541-753-2401 jvancura@peak.org , www.wamsi.org
August 5 - 7 Fri & Sat – 10 – 5 Sun – 10 – 4	Far West Lapidary & Gem Society	North Bend Community Ctr., 2222 Broadway North Bend OR	Don Innes 541 396 5722 doninnes.innes20@gmail.com
September 10 & 11 Sat – 9 – 6 Sun – 10 – 4	Clallam County Gem and Mineral Association	Vern Burton Community Ctr., 308 East 4 th Street Port Angeles WA	Jennie Bourassa 360 681 0372 or Kathy Schriner 360 681 3811 PO Box 98 Sequim WA 98382
September 10 & 11 Sat - 10 – 5 Sun – 10 – 5	Marcus Whitman Gem and Mineral Society	Walla Walla Cnty Frgrnds Community Cntr Bldg., 363 Orchard St., Walla Walla WA	Keith Bacus, 509 529 1248 1829 Howard St Walla Walla WA 99362
October 22 & 23 Sat: 9 - 6 Sun: 10 - 5	Clackamette Mineral and Gem Club	Clackamas County Fairgrounds, 694 NE 4th Ave, Canby, OR 97013	Beth Heesacker, heesacker@coho.net , 4145 NW Heesacker Rd., Forest Grove, OR 97116
October 22 & 23 Sat – 10 – 6 Sun – 10 – 5	Bellevue Rock Club	Vasa Park, 3560 West Lake Sammamish PKWY SE, Bellevue, WA	Bruce Himko bellevuerockclub@comcast.net PO Box 1851 Bellevue, WA 98009
November 12 & 13 Sat – 9 – 5 Sun – 10 – 4	Skagit Rock & Gem Club	Sedro Woolley Comm Center, 703 Pacific Street Sedro Woolley, WA	Debbie Frank skagitrockandgem@gmail.com PO Box 244 Mount Vernon WA 98273

